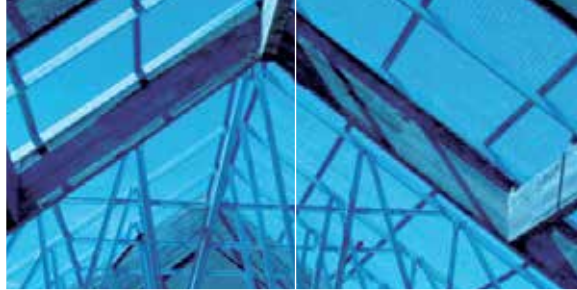


NS BLUESCOPE LYSAGHT MALAYSIA

LYSAGHT® SMARTRUSS®

Steely Support For Your
Biggest Visions



LYSAGHT® SMARTRUSS® System conforms to JKR Specifications & CIBD IBS Requirement



SMARTRUSS®

FAST, EFFICIENT, WELL-ENGINEERED STEEL TRUSS SOLUTION

SMARTRUSS® is a roof truss system that offers durability, affordability, strength, stability and compatibility with traditional building methods.

ADVANTAGES OF SMARTRUSS®

STRONG

- Made using **TRUECORE®** G550 steel which is 30% stronger than mild steel
- Strength to weight ratio superior to all other common building materials
- New shape more efficient allowing lighter gauge to be used

High Buildability Score

- Pre-fabricated roof trusses
- Reduced site labour
- Increased quality control

Lightweight

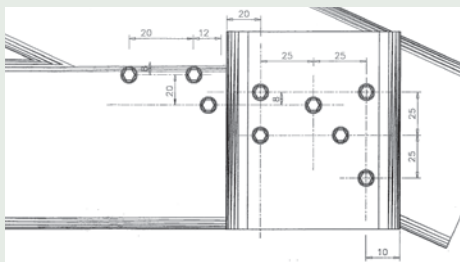
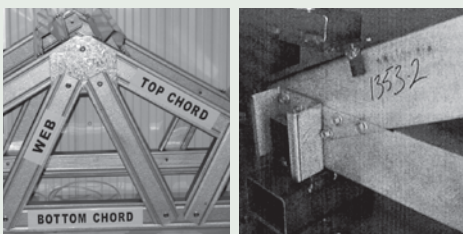
- Easily handled
- Low crange costs
- Lower foundation costs

Durable

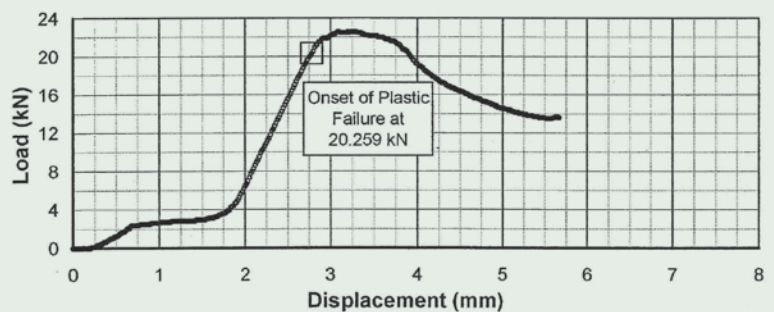
- Resistant to, and limits the spread of, fire
- Termite, moisture and fungus resistant
- Electrically safe when properly earthed

Design Flexibility

- High strength to weight ratio
- Provides larger spans and requires fewer supports
- Design tools facilitate structural design



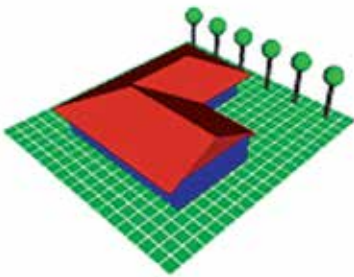
Heel Bearing Test of C75 1.0mm BMT Section with Short Stiffener and 9 off #12-14x20 Tek's



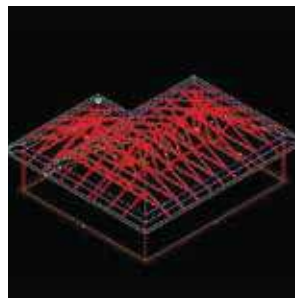
Load – Displacement of C75 1.0mm BMT 25 Degree Heel with Short Stiffener and 9 off #12-14x20 Tek's Compression Test 1

COMPUTER DESIGNED

LYSAGHT® SMARTRUSS® truss designs are supported by **LYSAGHT® SUPRACADD®** detailing software which models the geometry, designs the roof trusses and facilitates manufacture by licensed manufacturers. This high-quality, industry leading software enables precise, customised truss designs with all the necessary details for accurate construction. Critically approved by industry professionals, it comes with a full set of cutting edge features, and forms the essential foundation for any successful, world-class building project.



STEP 1 - Input Building Layout



STEP 2 - Trusses are designed



STEP 3 - Engineering Calculation performed

PRECISION MANUFACTURING



Truss components are manufactured



Bundled together and marketed



Can be fabricated off-site and delivered pre-assembled



Assembled on-site

Accredited by the National Association of Testing Authorities (NATA)

LYSAGHT® Technology operates a NATA-registered structural testing laboratory together with a complete research and development facility.

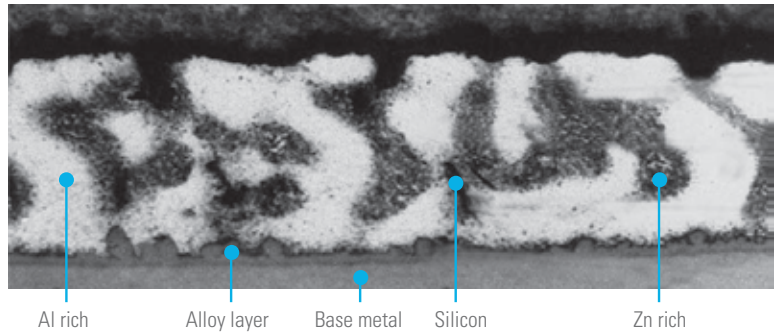


WHY TRUECORE® STEEL?

Key notes:

- High tensile strength minimum 550 MPa yield strength
- Structural load optimisation
 - Requires less building material
 - Reduces overall structural and lifting costs
- Corrosion-resistant coating technology
 - Highly resistant to corrosion and deformation
 - Unique in Malaysia
- Minimum service life of 50 years
- Certified to AS 1397 and MS 1196 by Sirim
- Conforms to JKR specifications - BMT≤1.2mm (G550; AZ150)
- Certified to SIRIM ECO-LABEL - Eco Friendly Coated Steel

Corrosion-resistant coating technology



- Coatings are applied to steel to prevent rust
- TRUECORE® steel coated with a 55% aluminium, 43.5% zinc, 1.5% silicon alloy coating
- AZ150 coating class (50µm coating thickness both surface)
- Outperforms normal zinc galvanised steel by up to 4 times
- Total both sides according to AS 1397

Advantages of TRUECORE® steel vs. Timber Trusses

- Material consistency
- Fire resistant
- Unaffected by termites
- Longevity
- Less installation errors
- Unaffected by warping

Advantages of TRUECORE® steel vs. Mild Steel Trusses

- Light and easy handling
- Welding not required and screw fastened
- Speed of construction
- Does not require painting
- Corrosion resistant
- No material wastage

Advantages of TRUECORE® steel vs. Galvanised Iron

- 4X stronger protection against corrosion
- Superior cut edge protection
- Better tight bend performance

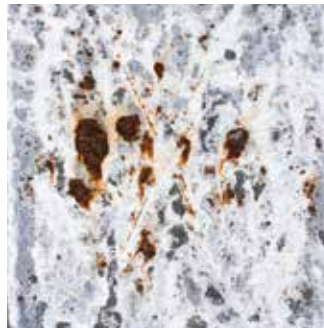


WARRANTY* OF 50 YEARS AGAINST PERFORATION BY CORROSION

TRUECORE® STEEL CORROSION PERFORMANCE

	Galvanised steel 300g/m ²	TRUECORE® steel 150g/m ²
Cleveland Condensing Humidity Test	4032 hours to red rust	14000 hours to rust free
Salt Spray Chamber	295 hours to 5% red rust	2260 hours to 5% red rust

After 500 hours (Salt Spray Test)



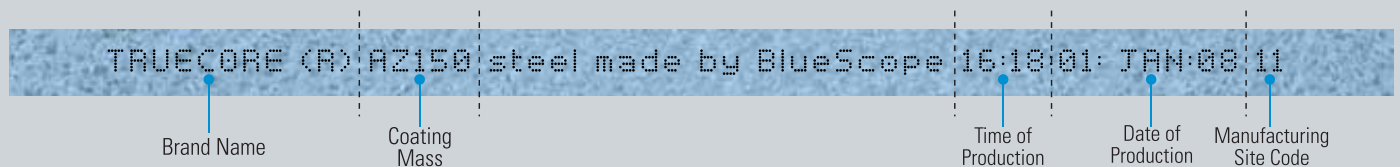
Galvanised steel Z180 TRUECORE® steel

* Warranty terms and conditions apply.

HOW TO IDENTIFY GENUINE TRUECORE® STEEL

Pay attention to the TRUECORE® steel branding text on every coil, which is your assurance of BlueScope commitment to quality.

Branding text:



LEARN MORE ABOUT **SMARTRUSS®**



Trusted Partner for Building Systems

NS BLUESCOPE LYSAGHT MALAYSIA SDN BHD

NO 6, PERSIARAN KEMAJUAN, SEKSYEN 16,
40200 SHAH ALAM,
SELANGOR DARUL EHSAN, MALAYSIA.

TEL: +603-5520 6600 FAX: +603-5520 6601/02

NORTHERN

1-2-9, KRYSTAL POINT CORPORATE PARK,
JALAN TUN DR. AWANG,
LEBUH BUKIT KECIL 6,
11900 SUNGAI NIBONG,
PENANG, MALAYSIA.

TEL: +604-646 9553 / 6653 FAX: +604-646 6853

SOUTHERN

BMS MALL - BLOCK A #02-08,
NO. 6, JALAN KENCANA MAS 2/1,
KAWASAN PERINDUSTRIAN TEBRAU III,
81100 JOHOR BAHRU,
JOHOR DARUL TAKZIM, MALAYSIA.

TEL: +607-355 1576/7/8 FAX: +607-355 1579

NS BLUESCOPE LYSAGHT SABAH SDN BHD

LORONG KURMA OFF JALAN KOLOMBONG,
88450 KOTA KINABALU,
SABAH, MALAYSIA.

TEL: +6088-445 161 FAX: +6088-421 178

NS BLUESCOPE LYSAGHT SARAWAK SDN BHD KUCHING

LOT 610, SECTION 66, PENDING INDUSTRIAL AREA,
JALAN MERBAU, 93450 KUCHING,
SARAWAK, MALAYSIA.

TEL: +6082-333 621 FAX: +6082-483 486

BINTULU

LOT 974, BLOCK 26 KLD,
KIDURONG LIGHT INDUSTRIAL ESTATE,
97000 BINTULU, SARAWAK, MALAYSIA.

TEL: +6086-251 736 FAX: +6086-252 881

NS BLUESCOPE LYSAGHT BRUNEI SDN BHD

INDUSTRIAL COMPLEX,
BERIBI PHASE 1,
6KM, JALAN GADONG,
BANDAR SERI BEGAWAN BE 1118,
BRUNEI DARUSSALAM.

TEL: +673-244 7155 FAX: +673-244 7154

NS BLUESCOPE LYSAGHT SINGAPORE PTE LTD

(Formerly known as BlueScope Lysaght (Singapore) Pte Ltd.)

18 BENOI SECTOR,
JURONG TOWN,
SINGAPORE 629851

TEL: +65-6264 1577 FAX: +65-6265 0951

www.lysaght.com.sg

www.lysaght.com.my
mysupport@bluescope.com
Customer Hotline:
1700-81-8688

Web:



Download Lysaght App at:



Follow Us on:



May 2017