



Life. While the Living
 Ladang Care and
 Positive Community
 in our local projects
 we have also run a number of smaller
 programmes under the umbrella of the
 successful thanks to our generous partners and the
 open spirit of the community at large. No two projects are
 the same, but each contribution we have made carefully
 selected to ensure our efforts are focused on these three areas. Through these
 Education, Healthcare, and Societal benefit. As a good corporate citizen, we want to ensure that
 the most difference when our work extends to us can be turned back into more good for society
 cannot simply be fixed in the blink of an eye. As a good corporate citizen, we want to ensure that
 the positive support our community has extended to us can be turned back into more good for society
 at large. Infrastructure is our speciality, and over the years, we were able to contribute to various infrastruc-

VIRTUE
KINDNESS
MAGNANIMITY
BENEVOLENCE
SELFLESSNESS
GENEROSITY
CARE

Access to a good education can make all the difference to the trajectory of a person's life.
 Education remains close to our hearts as it is only through the rigor of a person's study and
 experimentation that we can truly understand the world around us. We are committed to
 supporting both the enrichment of the minds of the construction workers and the
 hope to contribute to the enrichment of the minds of the construction workers and the
 of infrastructure. Much of our work revolves around the construction of the next
 generation. Through our commitment to CSR programmes, we foster our commit-
 ment to do all that we can to ensure the community and the environment are
 all that we do. Through our commitment to CSR programmes, we foster our commit-
 ment to do all that we can to ensure the community and the environment are
 all that we do. Through our commitment to CSR programmes, we foster our commit-
 ment to do all that we can to ensure the community and the environment are

COMMUNE

Milestone Of A Caring Embarkation

NS BLUESCOPE MALAYSIA





INTRODUCTION

For more than half a century, we here at **NS BlueScope Malaysia** have built our home in the Southeast Asian steel industry. We were established on the strong foundations, and now collaborate with business partners across various industries, borders and verticals, in both the public and private sectors.

People are the heart and soul of BlueScope. The success of BlueScope over the years is in large part thanks to the strength of the relationships we have built up over the years. Without our business partners and shareholders, our dedicated staff and the communities that we serve, BlueScope would not be where it is today.

In response to the pressing need we saw in our community, BlueScope launched its **CONNECTION** programme in March 2016. Since then, BlueScope has worked with community leaders and NGOs on a variety of community-centric projects, in the areas of Health & Safety, Education, Diversity & Inclusion, Community Facilities.

CONNECTION began as BlueScope's humble attempt to improve the lives of the underprivileged through a structured Corporate Social Responsibility (CSR) programme. The programme's foundational mission is to alleviate the community's problems by leveraging on the skills, resources and goodwill of the company and its long term business partners.

"This world we live in, it's our home" it's our responsibility to make it a better place, in whatever way we can."

Even though we have worked with many different beneficiaries over the years on a variety of projects, a central focus of the **CONNECTION** programme has been to provide needy communities with sorely-needed infrastructure solutions, especially in the area of shelter roofing.

These infrastructure projects not only draw on our expertise as a supplier and manufacturer of coated steel products, but also our network of business partners, who have generously donated their own resources and time as responsible corporate citizens.

Through the **CONNECTION** programme, we have been able to help improve the circumstances of society's neediest, such as those living in the Positive Living Community in Batu Arang, and the Orang Asli in Ladang Care, Orang Asal in Borneo Village, the refugees in Kuala Lumpur, animal shelters, orphanage and schools in Malaysia.

A side from improvements to infrastructure, we have also tried to give back by promoting healthy lifestyles and education efforts across various projects, as you will see throughout this book.

In this visual narrative journal, we want to celebrate the efforts, skills and kindness of our business partners, and share our experiences of working with society's less fortunate. Hopefully, by seeing the photos and reading our stories, you will be inspired by the power of a community working together to build a better world for everyone.



CONNECTION

Malaysian Care

Positive Living Community

Education

Healthcare

Social Good



MALAYSIAN CARE

Ladang Care Chenderiang, Perak

Background To The Ladang Care Chenderiang Project

Malaysia is home to a diverse range of cultures and races, with as much as 12 percent of the country's population comprising of Orang Asli communities. Though there are some Orang Aslis who have made their homes in urban and suburban areas, the vast majority of Orang Aslis still settle at forest fringes or in rural areas, meaning that many still earn an income through agricultural activities.

Orang Asli communities throughout Malaysia remain the most socio-economically vulnerable groups in the country: **more than half of all Orang Aslis live well below the poverty line, with poor access to healthcare, education, adequate housing, and opportunities to boost their standard of living.**

Ladang Care centre was set up by non-profit Malaysia Care, in response to the community's needs, in a 15-acre site near Chenderiang, Perak. Ladang Care aims to develop a programme of family-centric and sustainable agricultural projects that conform to the traditional Orang Asli's traditional way of life. These projects also counteract the effects of the modern commercial agricultural industry, which has destroyed much of Malaysia's rich, natural environment.



BlueScope Supports Ladang Care

This environment is not only important as a food source, but they are also the Orang Asli community's home. **Malaysian Care's Ladang Care** programme supports Orang Aslis' economic growth without compromising the forests' biodiversity through educational programmes, technology transfer, and capacity building workshops.

The programme, which was launched in 2010, has grown to accommodate as many as 150 farmers and community workers, the majority of whom were Orang Aslis from both the Peninsular and East Malaysia.

The objectives and mission of the Ladang Care project neatly align with the goals of **BlueScope's CONNATION** programme, through its community-centric focus and determination to support the Chenderiang Orang Aslis' chosen way of life. Furthermore, Ladang Care's emphasis on

NS BlueScope Malaysia www.bluescope.com.my

protecting the Orang Asli's traditional homes lies close to the heart of BlueScope's company values, which centers the importance of "home" for all stakeholders.

Recognising the significant positive impacts of the project in the lives of the affected communities, **BlueScope decided to respond to Malaysian Care's** call for donations to support the second phase of the **Ladang Care project**.

The second phase of the Ladang Care Project focuses on the improvement of the campus's infrastructure, following the successful launch of the sustainable agriculture programme which centers our Bond principles "**Our Communities Are Our Homes**"



In 2016, BlueScope committed to helping **Malaysian Care** by supporting the construction of several new buildings that enhanced the participation of the Orang Asli community. As part of its pledge to support Ladang Care, BlueScope donated the raw materials that would be used to construct the framework of the buildings, the centres' roofing trusses and several covered walkways to enhance mobility throughout the campus. The use of steel-reinforced buildings will ensure the campus can have safe & lasting impact on the Orang Asli communities and support their activities and projects long into the future.

In order to carry out the project, BlueScope enlisted the help of their long-time business partner, **Swissma Building Technologies Sdn Bhd**, who donated their time energy and resources to roll-form, deliver and provide safety advice to the construction of the structures. Working together, the two companies were able to gift the Ladang Care project with five new training centres and one admin space for the Orang Asli community. The buildings included two blocks that would be used as homes for families, a couple of dormitories that would act as housing for Malaysian Care trainees and volunteers, as well as a block of facilities that include classroom space, a multi-purpose hall and a kitchen.



NS BlueScope Malaysia www.bluescope.com.my



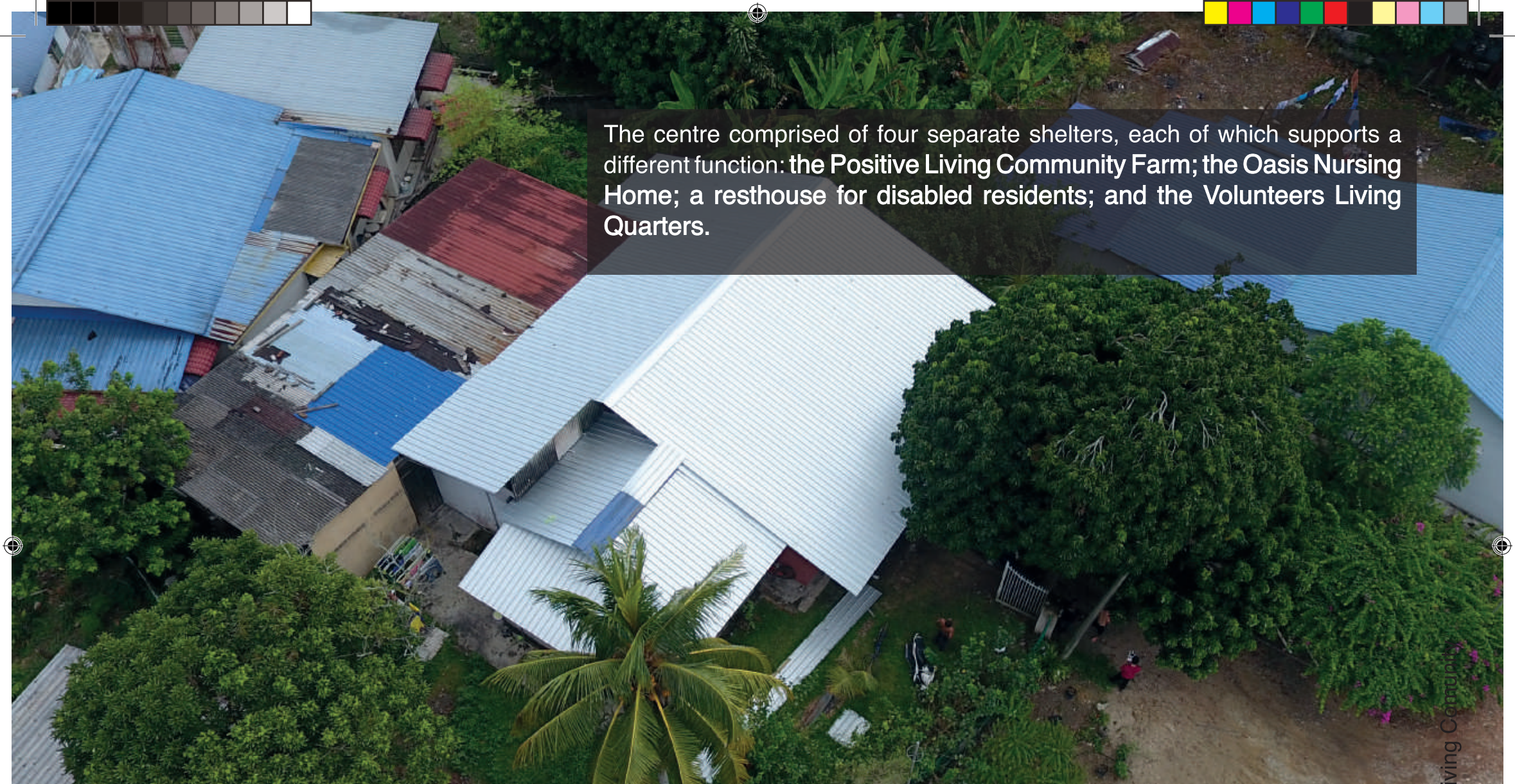
On the 17th of December 2016, **BlueScope** held an appreciation event with participating partners for the Malaysian Care project to celebrate the efforts and resources donated by them. The joyous event binds everyone to relate to the **Orang Asli communities** who would benefit from the new facilities. It brought everyone together with fun activities, guided facilities walkabout, food and entertainment. A true organic community connection.

NS BlueScope Malaysia www.bluescope.com.my

POSITIVE LIVING *community*

Making A Positive Difference

The Positive Living Community home is a not-for-profit organisation in Batu Arang was established in 1997 and was operating at a time when the spreading HIV crisis could not be sufficiently tackled by either private or public organisations. The home takes on 80 percent of patients referred by government hospitals, most of whom arrive at the centre as a last resort. PLC offers various services to its patients, including treatments for painful withdrawal periods, access to HIV treatment, as well as nursing services for the sickly and disabled. The programme also supports its patients as they transition out into the recovery stage through its “After Care” services, which gives each person the vocational skills to support themselves and return to society.



The centre comprised of four separate shelters, each of which supports a different function: the **Positive Living Community Farm**; the **Oasis Nursing Home**; a resthouse for disabled residents; and the **Volunteers Living Quarters**.

Positive Living Community has taken upon itself the work that few people ever see and even fewer appreciate: caring for rejected and homeless HIV and AIDS patients, and recovering drug and alcohol addicts. Among the shelter's residents — which numbers more than 70 people — are individuals who struggle with mental health disorders, or disabilities stemming from their addictions. The NGO provides not only treatment for their patients struggling to get back on their feet, but also sorely needed shelter and tender loving care.

These individuals depend on the centre, one of the few places that provide support to a group of people that have been rejected by society and are largely invisible to the rest of the world.

NS BlueScope Malaysia www.bluescope.com.my

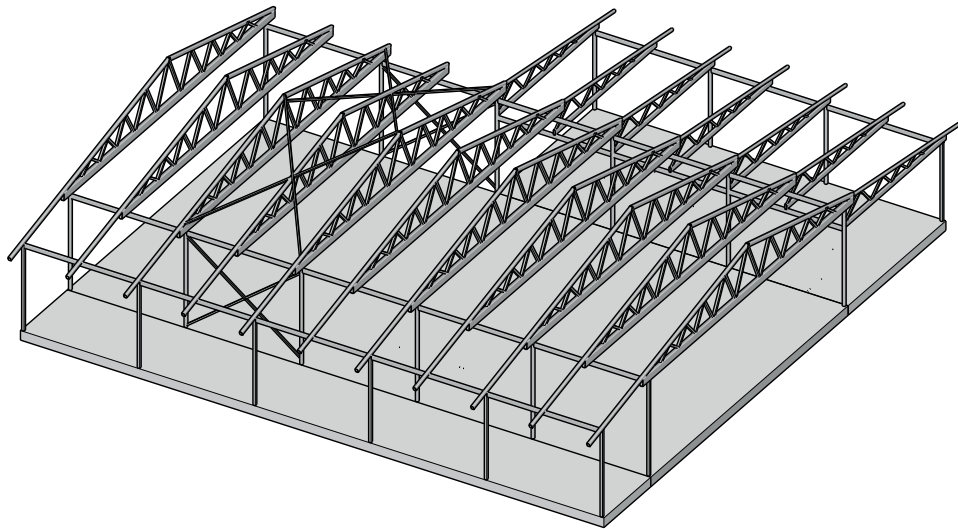
Positive Living Community

A Roof For All

The **Positive Living Community (PLC)** has a special place in BlueScope's heart, as it was the first organisation involved in our CONNECTION programme. Prior to our involvement, PLC was supported by the Malaysian branch of **Engineers Without Borders (EWB)** affiliated with Monash University Malaysia. Through this connection, EWB-Monash helped build the bridge between PLC and BlueScope, which remains to this day.



NS BlueScope Malaysia www.bluescope.com.my



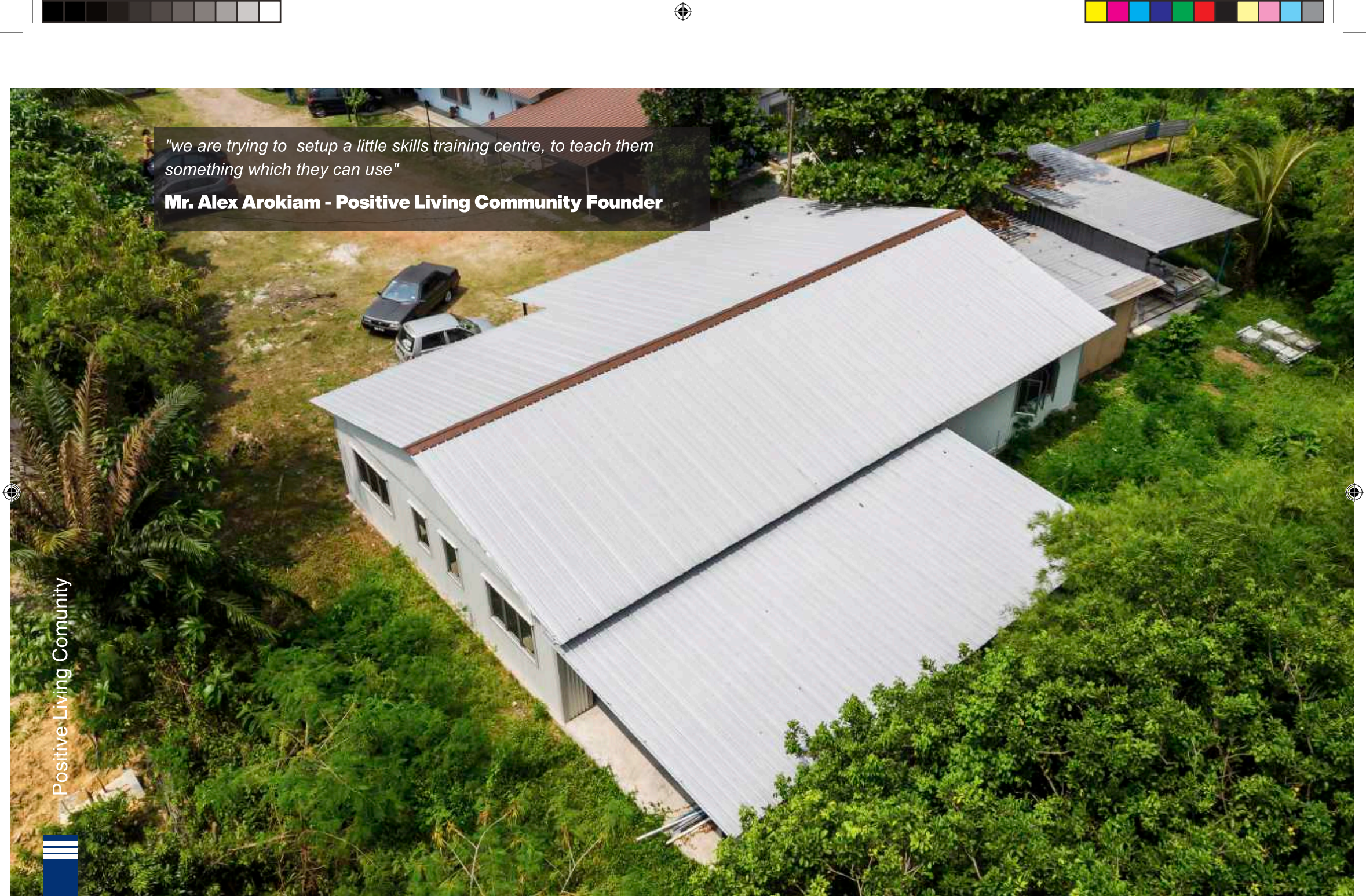
**Room To Bloom
Structure Overview**

In 2017, BlueScope supported the shelter in the construction of two structures that today play a crucial role in PLC's operations: a tea processing facility and a multi-purpose hall. The two spaces - which were built as part of PLC's **"Room to Bloom"** project, in conjunction with the **CONNECTION** program - were designed to provide PLC's residents with space to grow the farm's tea farming and production enterprise: as well as a learning space for the after care program.

BlueScope has worked with PLC on several projects over the years since 2015, cultivating a fulfilling relationship that has benefited the home's many patients. Though the majority of works with PLC have been related to improving the centre's infrastructure, BlueScope has also provided other forms of support, such as monetary donations for events, educational outreach programmes and donations of office furniture.

NS BlueScope Malaysia www.bluescope.com.my





"we are trying to setup a little skills training centre, to teach them something which they can use"

Mr. Alex Arokiam - Positive Living Community Founder

Positive Living Community



NS BlueScope Malaysia www.bluescope.com.my

Later, in 2018, BlueScope continued to work with PLC in response to a plea for help. **PLC's Oasis Nursing Home** - a 22-bed residential facility which supports late-stage HIV patients - and the PLC Volunteers Home, were in dire need of replacement. After nearly thirty years of use, both buildings' roofs were corroded and suffering from severe leakage issues. The leakage affected not only the interiors of both shelters, but also posed serious health and safety risks. Despite their efforts to resolve the issue, PLC were unable to definitively solve the problems on their own. Through the partnership, the PLC kitchen area also underwent a small renovation to make it larger and improve overall ventilation.

Fun Facts

Who Are Bluescope's Partners?

- Asteks Asia Pte Ltd
- Changkat Bayu Engineering Sdn Bhd
- Duro Metal Sdn Bhd
- Engineers Without Borders, Monash Malaysia Chapter
- Mr. J.T. Choong
- NS BlueScope Lysaght Malaysia Sdn Bhd
- PGF Insulation Sdn Bhd
- Rondo Metal Products Sdn Bhd
- Seal Form Marketing Sdn Bhd
- Sky Zip Metal Sdn Bhd
- Swissma Building Technologies Sdn Bhd
- Trifix Construction Resources Sdn Bhd

searching life....is

**& COMPASSION
EMPATHY**

Conne

ecting

**SINCERERITY
RELATIVITY**



**to spark
A RAY OF LIGHT**



FRINGE Initiatives (2015-2019)

Since 2015, The CONNATION Project has been the crown jewel of the BlueScope CSR programme, one which we hope will have a long life. While the Ladang Care and **Positive Living Community** projects remain in our long-term commitments, we have also run a number of smaller programmes under the CONNATION umbrella over the years. Each one has been successful thanks to our generous partners and the open spirit of the community at large.

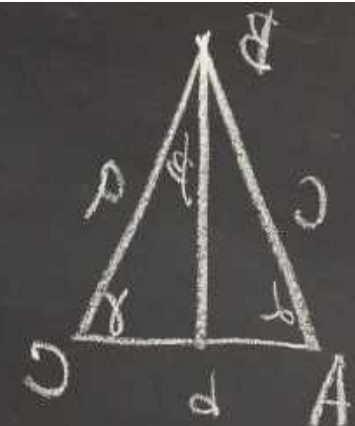
No two projects are the same, but each contribution we have has been carefully selected to ensure the needs are met. We are very passionate in **providing education, safety awareness, skills and societal needs, with love and care.**

Through these stories, we hope you will also come to the same conclusion.

Education

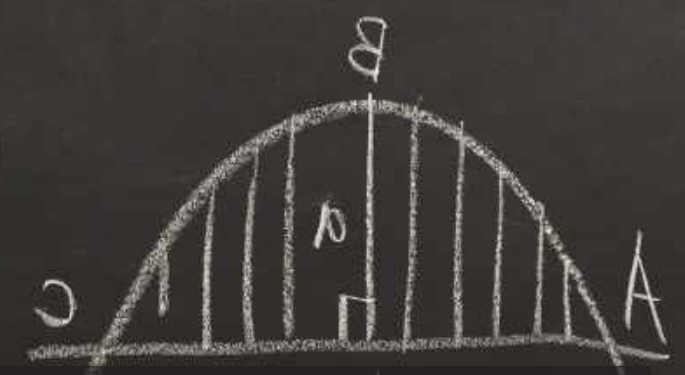


$$2 = 4\pi R^2$$
$$V = \frac{4}{3}\pi R^3$$



$$2 = \frac{1}{5} \cdot r \cdot (\alpha - 2\sin\alpha)$$

$$2 = \frac{2}{3} \cdot a \cdot p$$



Access to a good education can make all the difference to the trajectory of a person's life, especially those who come from underprivileged backgrounds. Education remains close to BlueScope's heart as it is only through rigorous study and experimentation that humanity has been able to achieve great milestones. In line with that philosophy, support for academic and extracurricular initiatives is a central pillar of the CONNACION Project. We provide intangible resources in order to contribute to the enrichment of the next generation's minds—and in doing so, cultivate more opportunities for other communities in need.

Ideation To Innovate

One of our enduring partner is **Monash University Malaysia**, with whom we have worked on a number of projects since 2015. Monash University has proven to be a valuable contributor to the community in its commitment in expanding its students' minds beyond just their academic studies, but also their roles in bettering society.

We have been proud to be the main sponsor by supporting their TEDx event held in both 2017 & 2018. Both inspired events were graced with 250 attendees. We shall look forward for the beneficial up coming one in no time.



Engineering Project Management Program

Fringe Initiatives

As one of the steel producers in the region, our presence in the engineering project management panellist carries the crucial guide for students in this relevant studies. **NS BlueScope Lysaght Malaysia and Swissma Building Technologies Sdn Bhd** shared the commercial industry experience with the third & final year student. Actual case studies were evaluated by utilising 360 degree viewing technology coupling with the best practise in solutions as an upmost learning ecosystem for the students.



NS BlueScope Malaysia www.bluescope.com.my



Boosting Access To Education: Hikaru Digital Learning Centre

However, access to education, is not always easy in Malaysia. Very often, marginalised communities from refugees to underprivileged families are unable to gain access to the most basic of educations due to poor infrastructure or services.

Having a safe environment is a key step to ensuring students are able to succeed. In another instance, we supported the **Hikaru Digital Learning Centre in Kubu, Melaka** project contributed by **United Seasons Sdn Bhd**, by further improving the existing structure. The Hikaru Centre named after the daughter of a generous contributor fills a major gap in the community by providing a fun learning environment for both students and the community to engage with digital media, create handicrafts and model building.



NS BlueScope Malaysia www.bluescope.com.my



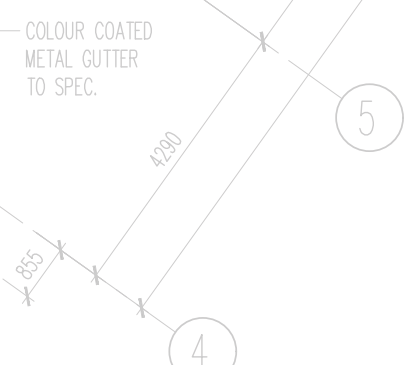
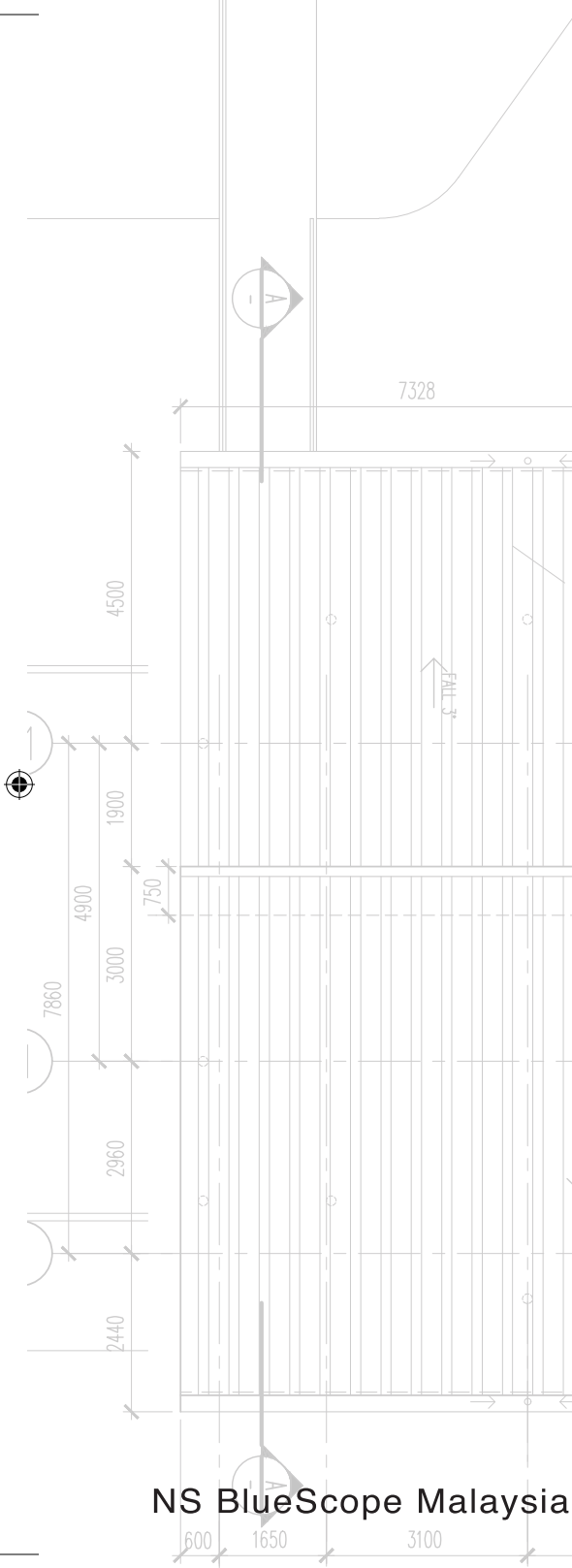
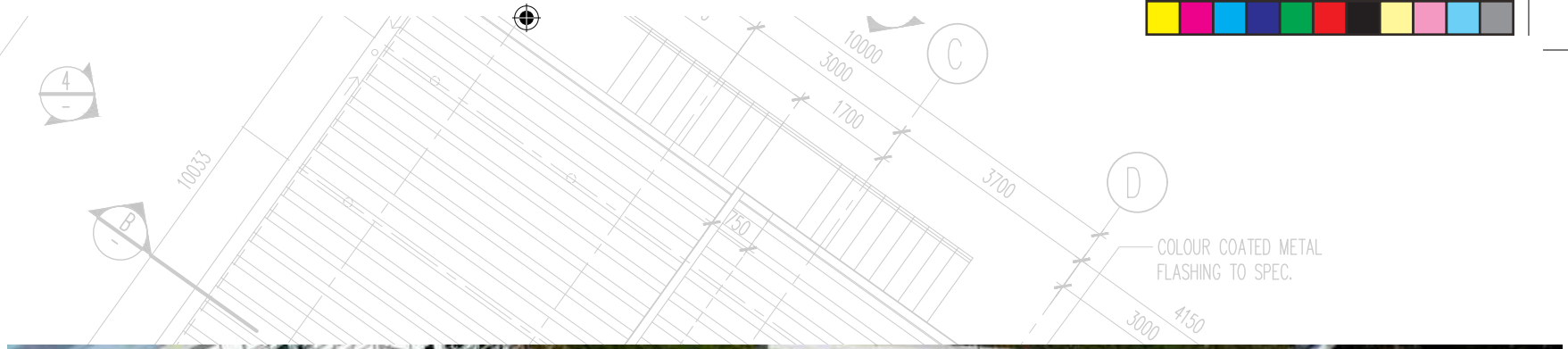
St Mary's School, Sarawak

We collaborated with our sister company, **NS BlueScope Lysaght Sarawak** in order to provide students in Kuching with proper amenities. The identified institution was **St Mary's School**, in Kuching, Sarawak, which was built in 1848. The school reached out to Lysaght as they lacked funding to repair their existing vulnerable canteen. To fulfill the pledge, NS BlueScope Lysaght Sarawak took the commitment and began their help in providing roll formed roofs by working closely with the school authority. The building was completed with a very functional facility caters to the students and teachers of St Mary's. We are truly proud of how our roof shields them in years to come.



NS BlueScope Malaysia www.bluescope.com.my





ROOF PLAN
SCALE 1:125

ADVOCATING Holistic Education

Technical and Vocational Education and Training (TVET), a holistic education is one will adequately prepare students with practical experience to meet the future head-on. Across several programmes, we have partnered with educational institutions in order to provide students with skilled experience and educational programmes that will inspire and expose them to their full potential.

Port Dickson Polytechnic (PDP)



NS BlueScope Malaysia www.bluescope.com.my



One such case was the educational programme we ran with the **Port Dickson Polytechnic's (PDP) Faculty of Architectural and Structural Engineering**. Through this programme - which was the first educational programme of this sort we ever ran - we gave students and lecturers from the faculty the opportunity to work with our partner companies on a project to build two single-storey houses. Both **Ducero Sdn Bhd** and **Asia Roofing Industries Sdn Bhd** supported students in the design and construction of the houses, which were fitted with drywall and wetwall systems built with ENDUROFRAME® steel structure.





ENDUROFRAME® IBS Training



Fringe Initiatives



Since our programme with Port Dickson Polytechnic, we have continued our educational programmes with Monash University. Particularly interesting is the **ENDUROFRAME® IBS training programme**, which we run in partnership with **ENDUROFRAME® Australia and Ducero Malaysia**. The programme gives third and fourth year engineering students at Monash the opportunity to get some hands-on experience in the construction industry. Across two days in July 2019, 31 students from Monash's Malaysian and Australian campuses got to work on building a single-storey IBS steel frame house on Ducero site, using ENDUROFRAME® proprietary design software, **ENDUROCAD®**.



NS BlueScope Malaysia www.bluescope.com.my



Engineering - Tropical Exchange Challenge (ETEC) Plant Tour

In order for students to get holistic education which will support them in their futures, we believe that students must be actively challenged with experiences beyond what can be achieved in a classroom setting. Through the “**Engineering – Tropical Exchange Challenge**” (ETEC), students got a front row seat to what working in the construction industry steel manufacturing looks like. The ETEC is an educational initiative funded by the Australian's New Colombo Plan and organised by **Monash’s School of Engineering**.



Monash Women Engineers Visit

BlueScope hosted a group of promising female engineering students from Monash University's KL Campus in conjunction with International Women's Day Celebrations. The students were eager to discover about our environment sustainability efforts as an organisation - something they look forward in their future endeavours.



NS BlueScope Malaysia www.bluescope.com.my

Monash University, Malaysia's Engineering, IT Leadership Program (EILP)



"Wonderful collaboration in sharing expertise and knowledge between BlueScope's colleagues and our teachers & students"
Professor Andrew Walker - President Monash University Malaysia



BlueScope has been an involved partner to **Monash's School of Engineering** in various talks and events. BlueScope took part in the **Engineering, IT Leadership Program (EILP)** to conduct an interactive session among the engineers-to-be audience. Our Panellist representing BlueScope shared on topics in empowerment, good practices and culture, adaptation to the modern world; which were the most favourable areas of interest that had brought excitement to audience. Shaping the young engineers to a sustainable future in the era of Industry Revolution 4.0.

Healthcare

Much of our work revolves around the construction of infrastructure that is not only functional but safe for its users. Health and Safety is not simply a term to be bandied about, but a concept to be centred in all that we do. Through our CSR programmes and the CONNATION Project, we foster our commitment through Our Bond, thereby ensuring the communities we work in are aware of the importance of their health, safety and environment. The CONNATION programme makes space for health - related contributions that focus not only on issues relating to the construction industry, but how our physical and mental health can be protected and improved.



World Heart Day

In September 2015, we embarked one of our health projects in the Kapar area, where we are headquartered, in conjunction with **World Heart Day**. We worked with our partners the Development and Safety Authority of Kampung Bukit Kapar, and the KPJ Klang private hospital to organise a free health screening for the resident of the Kapar, Selangor neighbourhood.

Residents in this financially challenged neighbourhood were provided free basic health screening services, with a particular focus on cardiac health. There were also educational elements to the event: **speakers gave pointers to the community members on how to care for their cardiovascular health in order to reduce the risk of heart disease.**



Supporting Monash University's iCHEM Engineering Sports Day



Sports has been a widely accepted activity that blends active connection between classroom studies with outdoor activities. We were glad to be part of the attendees supporting the activities with **Monash IChemE of the School of Engineering**. The wide spread culture of fitness, diversity and inclusion were among the best moments of active participation we all have gained.



Social Good

Society has many problems that cannot simply be fixed in the blink of an eye. As a good corporate citizen, we believe CONNATION Project will become a platform through which we can ensure that the positive support of our community has extended to us can be turned back into more good for society at large. Providing the essential resources for creating social good is the foundational idea behind the CONNATION Project. We believe that our efforts will have a net positive impact that will eventually benefit the whole community. Infrastructure is our speciality and over the years, we were able to contribute to various infrastructure-focused projects that alleviated many of the small but significant problems faced by communities all over Malaysia.

Supporting The Semenyih Senior Citizens' Home

One of our ongoing works is with the Semenyih Senior Citizens' Home, which began in 2017. DMI Building Products Sdn Bhd and Trifix Construction Resources Sdn Bhd were the partners in this project. The home's roof was in challenging shape and it was then replaced with a safe & durable shelter with assistance from our kind partners. We are delighted that the home's 'Golden Citizens' are under the safe roof for the years to come.

Supporting Our Orang Asal Community

Our work with the Orang Asal remains close to our heart, and we try to support this marginalised as best we can. In 2016, **we supported our partners at United G.I. Products Sdn. Bhd (UGI)**, on their CSR project which involved helping an indigenous family in Kuching rebuild their home. UGI made the roll forming and installed to provide a safe and reinforced the family's roof.



NS BlueScope Malaysia www.bluescope.com.my

Ba Abang, Penan Village



Between 2017 and 2018, we embarked on a longer term project with a Penan village in Ba Abang, which is part of the Baram district of Miri, Sarawak. The Penan tribe is one of the most impoverished aboriginal tribes in Malaysia, partly due to their geographical location which inhibits access to education and work opportunities.

In response to the Penan tribe's dire needs, we worked with **Malaysian Care and United G.I. Products Sdn Bhd (UGI)**. We provided batches of roofing material, totalling 500 sheets, to the Penan villages in Ba Abang. Malaysian Care handled the tricky logistical problem posed by the project: they organised numerous trucks to transport the materials from Miri to Ba Abang across rocky and muddy terrain and harrowing journey that takes at least 8 hours in each direction.

Our service partner UGI provided invaluable training to the Penan community. The Penan village in Ba Abang lack sufficient electricity, water and internet facilities so the training proved to be effective in equipping the tribe members with the skills to install the new roofs, as well as basic safety measures. We're proud to say that through this collaboration, the Penan villagers were able to support the installation of new and safe roofs for 250 homes.

NS BlueScope Malaysia www.bluescope.com.my

Supporting Our Kapar Schools

We sponsored **Sekolah Abdul Samat** a waiting area or "Pondok Bacaan". Previously, the students had to wait in the sweltering heat for their parents or transporters to arrive, but in order to care for their safety and health, the waiting area was built and had become an ideal designated area for pick-up and drop-off. This project was generously co-sponsored by **United Seasons Sdn Bhd** and **Creative Instyle Sdn Bhd**.

For a termite damaged wooden surau, with the coordination from **KHP Roofing (M) Sdn Bhd**, we had provided a larger roof that ensures safety and durability to **Sekolah Kebangsaan Kapar**. The students and teachers are safe to practice their prayers under a solid roof.



Sekolah Abdul Samat



Sekolah Kebangsaan Kapar



Sekolah Abdul Samat

Working To Benefit Special Needs Children

Another one of our CSR partners is the **Yayasan Nanyang Press**, the community foundation of the local media company. Yayasan Nanyang Press has done immensely positive work with low-income students with learning disabilities through its **“Dream House for the Hidden Stars Programme”**. The Dream House programme offers free training to these students to develop their talents. In support of this programme’s invaluable work, we donated RM 12,000. As a gesture of appreciation, Yayasan Nanyang Press gifted us with a year’s worth of copyright to twelve paintings by autistic students, which we have included in the 2018 edition of our annual calendar.



NS BlueScope Malaysia www.bluescope.com.my

Home For Special People, Cheras



In another case from 2019, we worked with our partners, **DMI Building Products Sdn Bhd** and **WL Resources Sdn Bhd**, to help the orphan residents of Home for Special People, in Cheras. The home provides shelter to orphans who require medical assistance; in this case, they could not afford to fix leakages in their roofs. Together with our generous partners, we were able to ensure the home's leaking problems were quickly and properly solved, to ensure the orphans could recover without fear from bad weather.



NS BlueScope Malaysia www.bluescope.com.my

Helping KL Pooch Rescue

It's not just the humans in our community that we have looked to benefit; animals play an important role in our society, and many non-profit organisations are responsible for ensuring our furry friends are able to live meaningful lives. Since 2017, we have been supporting the **KL Pooch Rescue**, an animal welfare organisation that ensures its animals have access to medical treatment, quality food, a hygienic and conducive environment. The hostel of the organisation suffered greatly when the roofs were blown off during a storm. We were able to support the organisation by providing the materials for roofing sheets to fix the structure and ensure the hardworking staff had a safe place to call home.

Fun Facts

Who Are Bluescope's Partners?

- Ampelite (Malaysia) Sdn Bhd
- NS BlueScope Lysght Malaysia
- Upper Vanguard Sdn Bhd
- United Seasons Sdn Bhd
- YH Laminated Product Sdn Bhd



Coral Reef Restoration

Coral Reef Planting - Diminishing coral reefs in the marine ecosystems, due to tourism, over scaled fishing activities, harmful pollution and climate change. These delicate beings are much threatened to an alarming stage. In 2017, Team Lysaght Sabah initiated a coral planting effort just off the Mamutik Island, Sabah.

A humble beginning step with 40 corals regeneration by utilising an underwater concrete method which gradually increases to 1000 corals in numbers. To date, this great step has garnered the spread of **NS BlueScope Lysaght Sabah Sdn Bhd** team involvement. Following the trial usage of Bluescope off cuts materials for regeneration , the outcome was very positive indeed. To destroy...it only take seconds, to rebuild... it might take a whole life time. Let's us all enjoy the glorious beauty of our underwater life forms in the years to come.



NS BlueScope Malaysia www.bluescope.com.my



Outro

In more than three years since **NS BlueScope embarked on Project CONNAction**, we have strived on countless engagements to better our community. Small steps paving to larger foot prints—it is important to take a moment to reflect on what we have achieved, and what potential we have yet to fulfil. We hope that by exploring about our experiences in working on this project, you will glimpse just how meaningful the work has been for all of us. This photobook documented us in taking whatever steps we are able to chance a goodwill commitment.

We would also like to take this moment to extend our gratitude to **our esteemed partners**, without whom we would never have realised this embarkation. Their contributions and generosity are a testament to the positive impact the private sector can bring to society as a whole—we are very fortunate to be able to partner with such upstanding members of the community. It is in this spirit and the belief in our ability to drive our CSR efforts to..... **FUTURE FORWARDS !**



PROJECT ACKNOWLEDGEMENTS

- The Ladang Care Chenderiang Project
- Positive Living Community
- Ideation To Innovate
- Engineering Project Management Program
- Boosting Access To Education: Hikaru Digital Learning Centre
- St Mary's School, Sarawak
- Port Dickson Polytechnic (PDP)
- ENDUROFRAME® IBS Training
- Engineering - Tropical Exchange Challenge (ETEC) Plant Tour
- Monash Women Engineer's Visit
- Monash University, Malaysia's Engineering, IT Leadership Program (EILP)
- World Heart Day
- Supporting Monash University's iCHEM Engineering Sports Day
- Supporting The Semenyih Senior Citizens' Home
- Supporting Our Orang Asal Community
- Ba Abang , Penan village
- Supporting Our Kapar Schools
- Working To Benefit Special Needs Children
- Home For Special People, Cheras
- Helping KL Pooch Rescue
- Coral Reef Restoration









