

# DEEPER LOOK INTO IBS FOR LIGHTWEIGHT STEEL FRAMING

Prepared by Mr Choo Chian Chee

28<sup>th</sup> August 2021

# 20 YEARS OF CONTINUOUS DEVELOPMENT, AND IMPROVEMENT.

ENDURO FRAME®

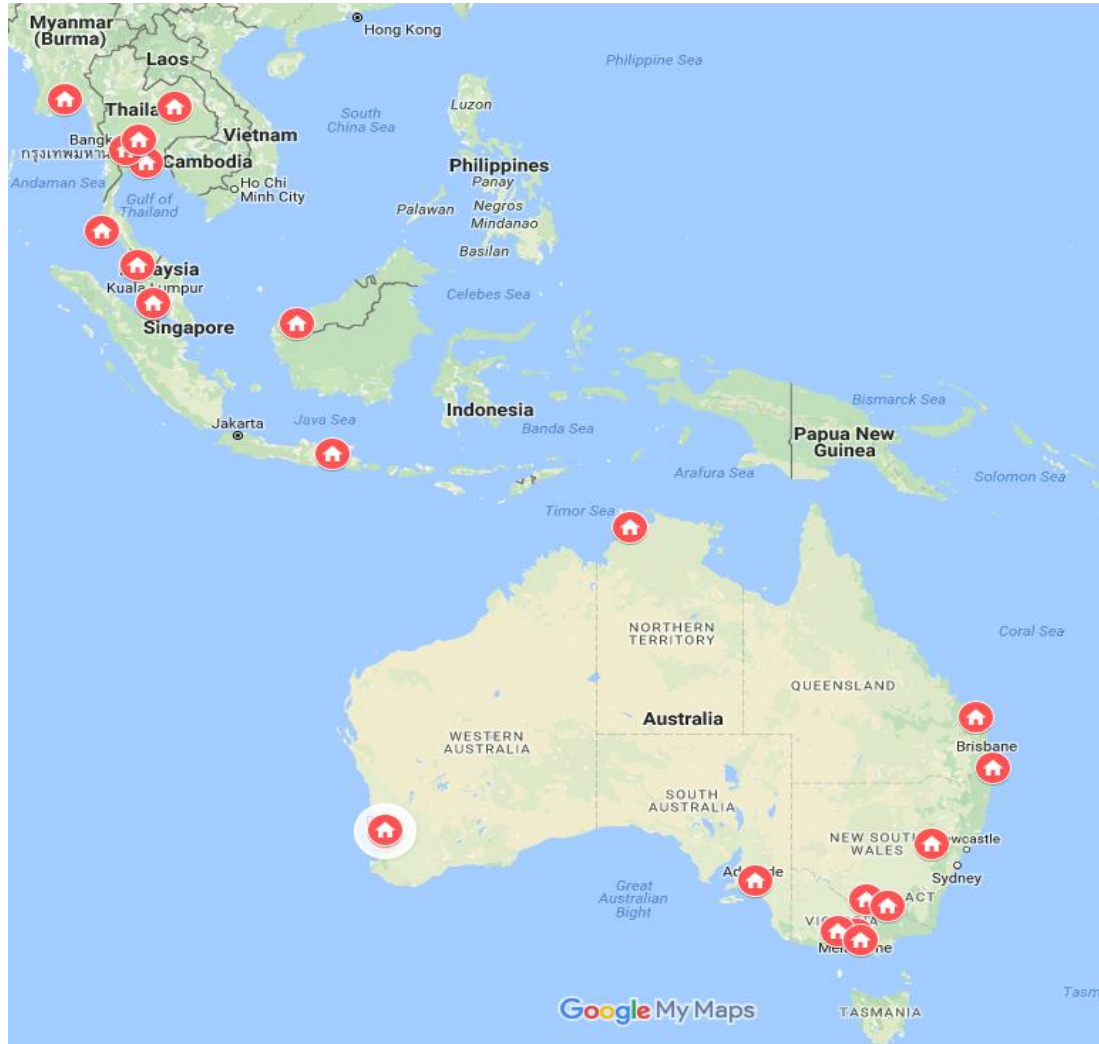
Many thousands  
of buildings  
constructed, and  
counting...



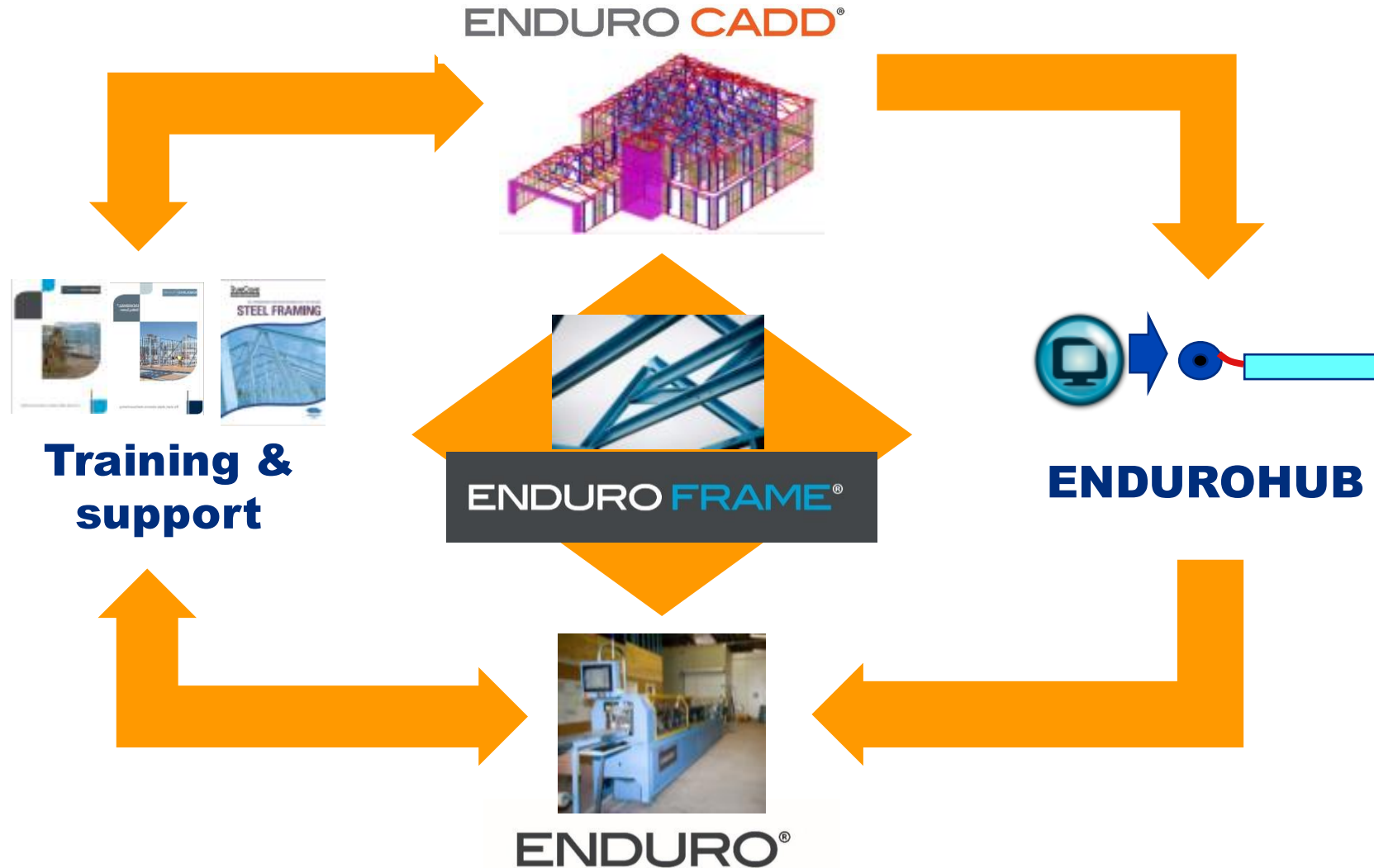
# GROWING THROUGHOUT AUSTRALIA AND INCREASINGLY THE WORLD



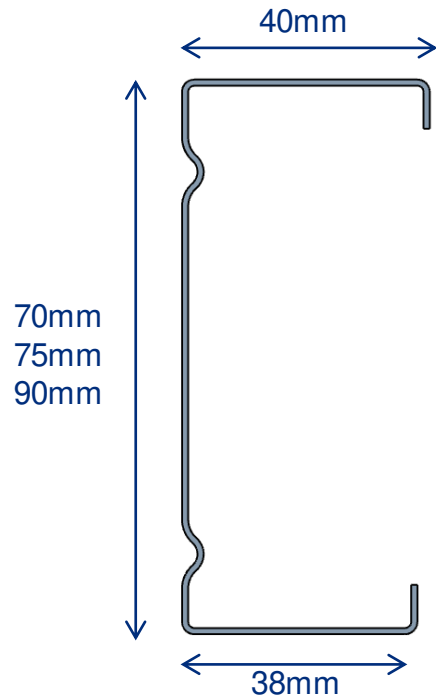
# ENDUROFRAME® SYSTEM PROVIDERS



# THE ENDUROFRAME® SYSTEM IS A COMPLETE LIGHTWEIGHT STEEL FRAME SOLUTION

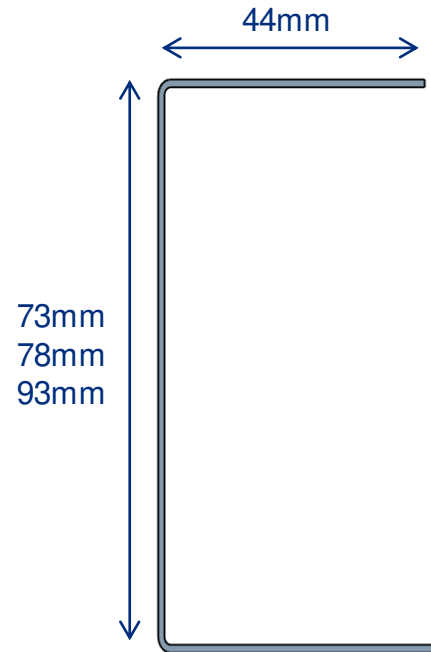


# ONE ROLLFORM MACHINE, TWO PROFILES!



## C Section

- Ribbed profile adds 20% strength over unribbed
- Used for trusses and studs



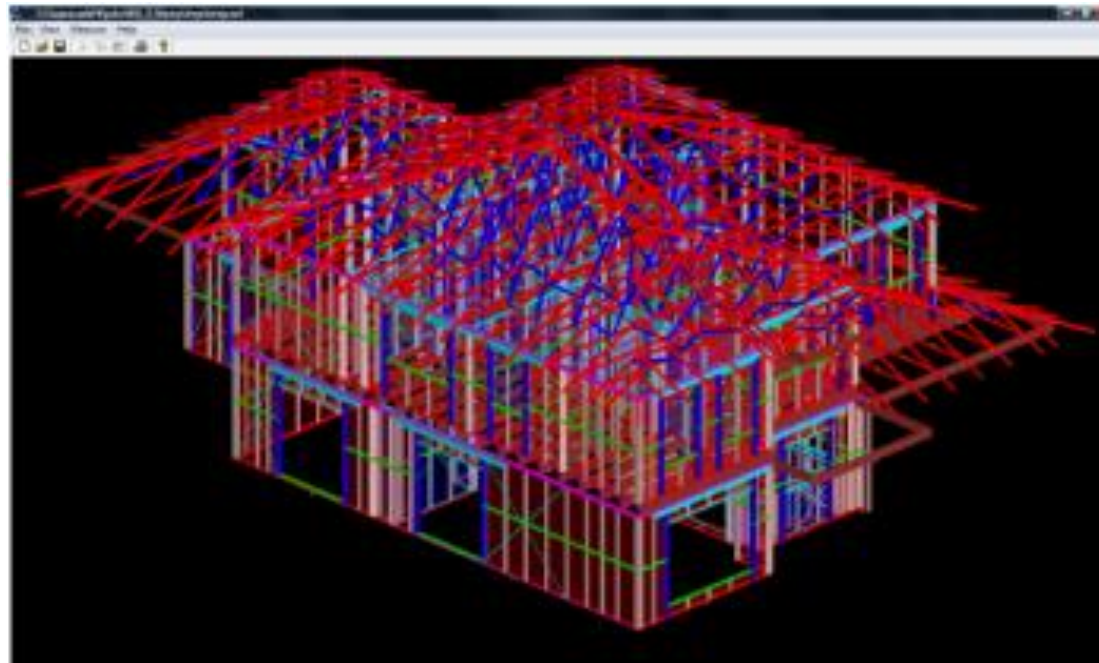
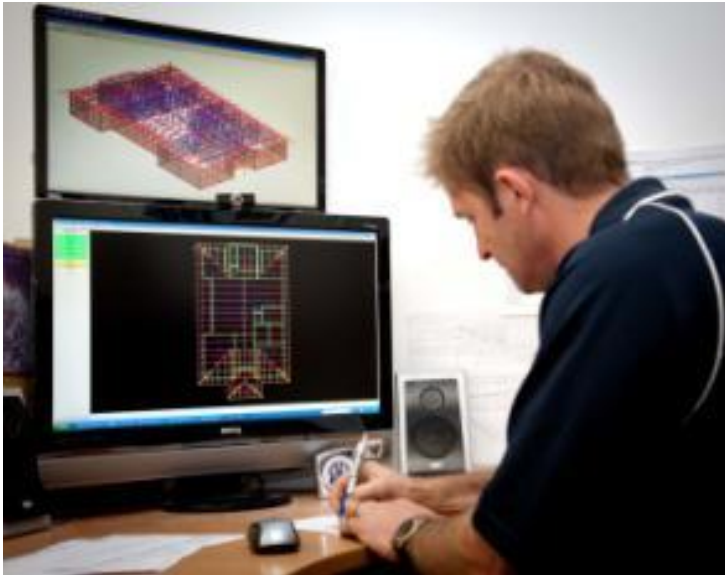
## U Section

- Unribbed profile means no swaging of studs
- Used for plates, noggings, head and sills

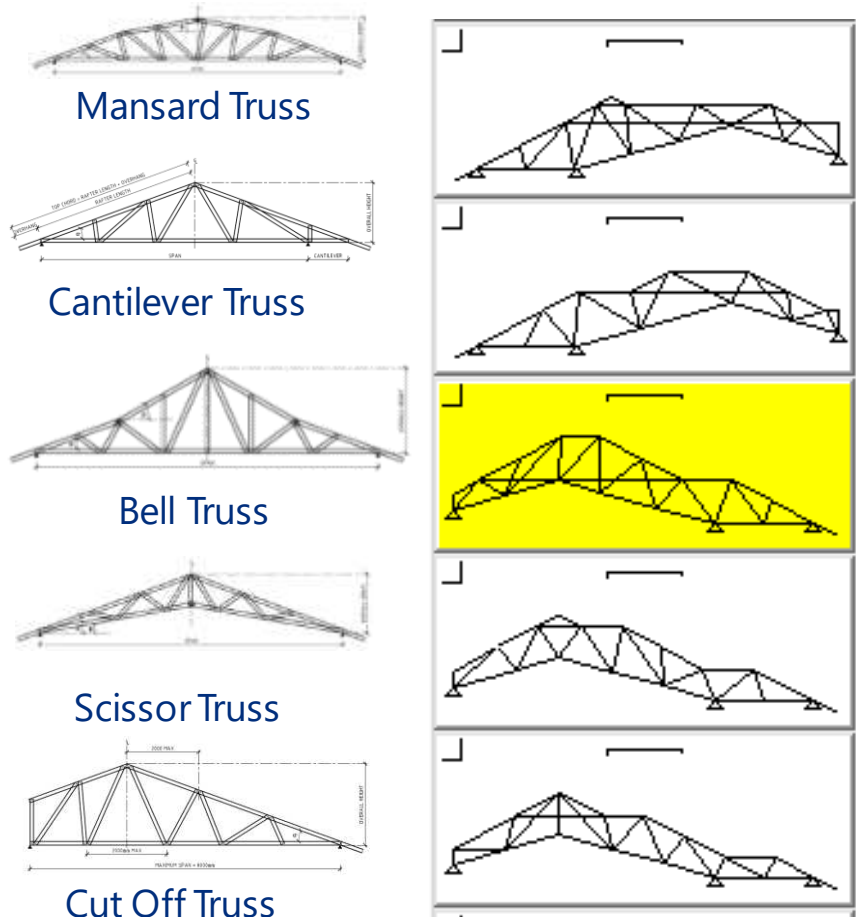


# SOFTWARE IS THE KEY

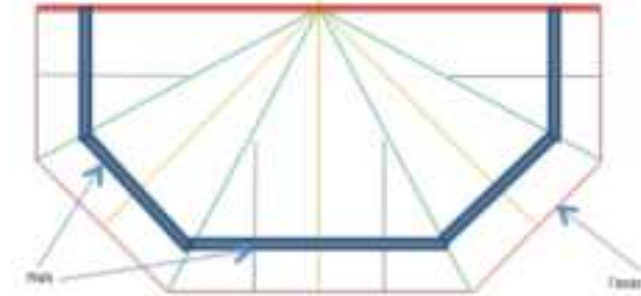
- No specialist CAD skills required
- Graphic interface ensures the users can see the completed frame components and their connectors
- 3D visualisation enables close inspection of all connections and blocks
- Software only model



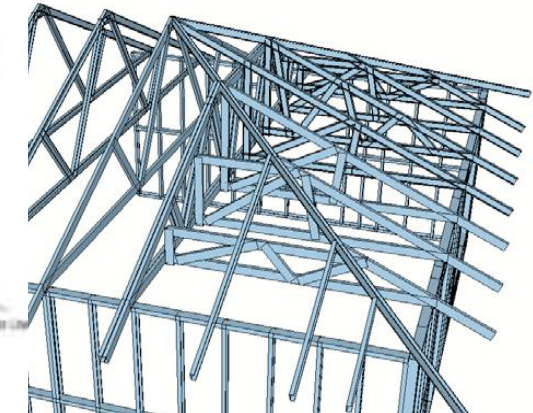
# THE SOFTWARE ALLOWS GREAT DESIGN FLEXIBILITY TO MEET MODERN ROOF CONSTRUCTION...



- Complex roof shapes can be easily modelled, detailed and designed with the ENDUROCADD® software and eventually manufactured from dedicated machine.



Radial roof

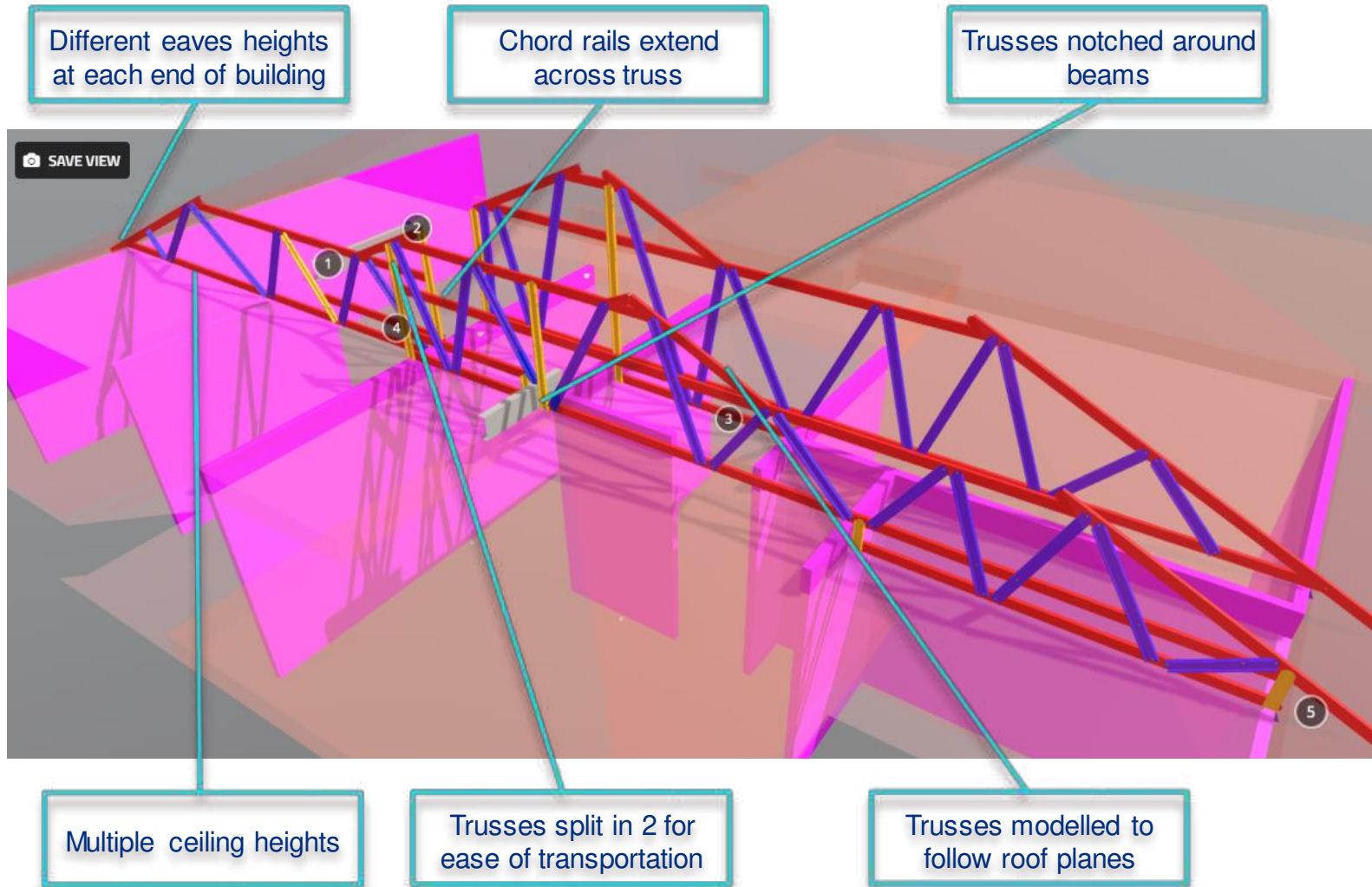


Smart hip

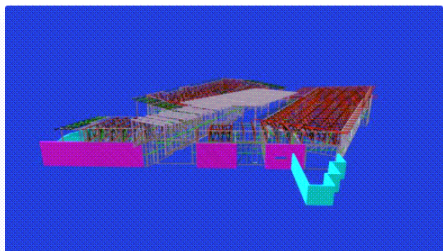




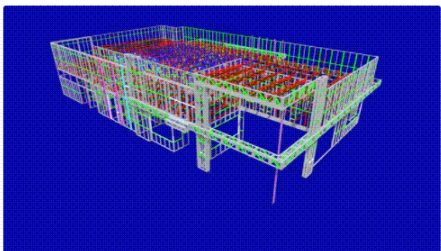
# THE SOFTWARE IS SUITABLE FOR EVEN THE MOST COMPLEX ROOF DESIGN



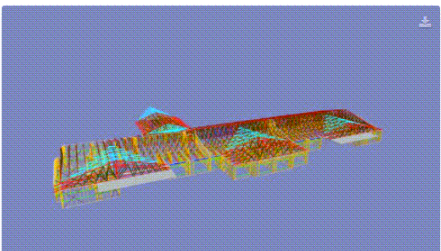
**enduroframe** PREMIUM Melbourne, Australia  
 Efficient Steel Framing.  
 + FOLLOW 20 Followers 9 Followings



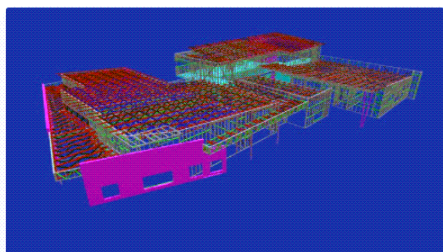
Bow Street ELC Complete Frame - v6 136 0 1



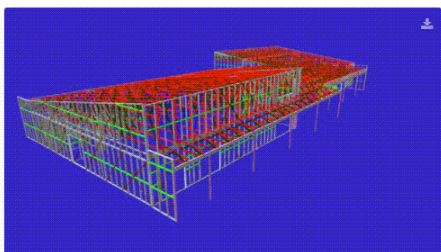
3D-Maccas Pumicestone Rd (Caboolture) 101 0 0



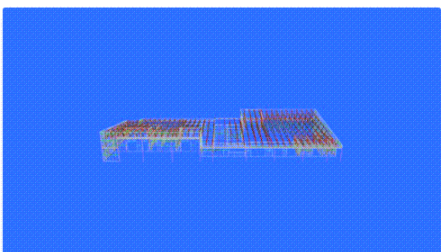
Dougherty Nursing Home - Grafton NSW 78 0 0



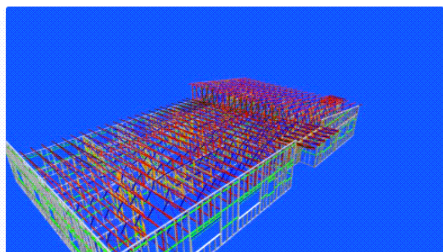
3D Nth Harbour 148 0 0



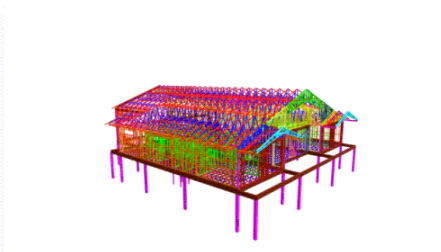
3D-St Joesephs Kindergarten-Version 3 221 1 1



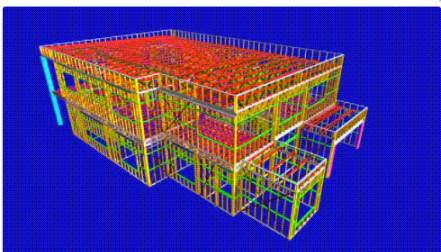
Stjosephs 9 0 0



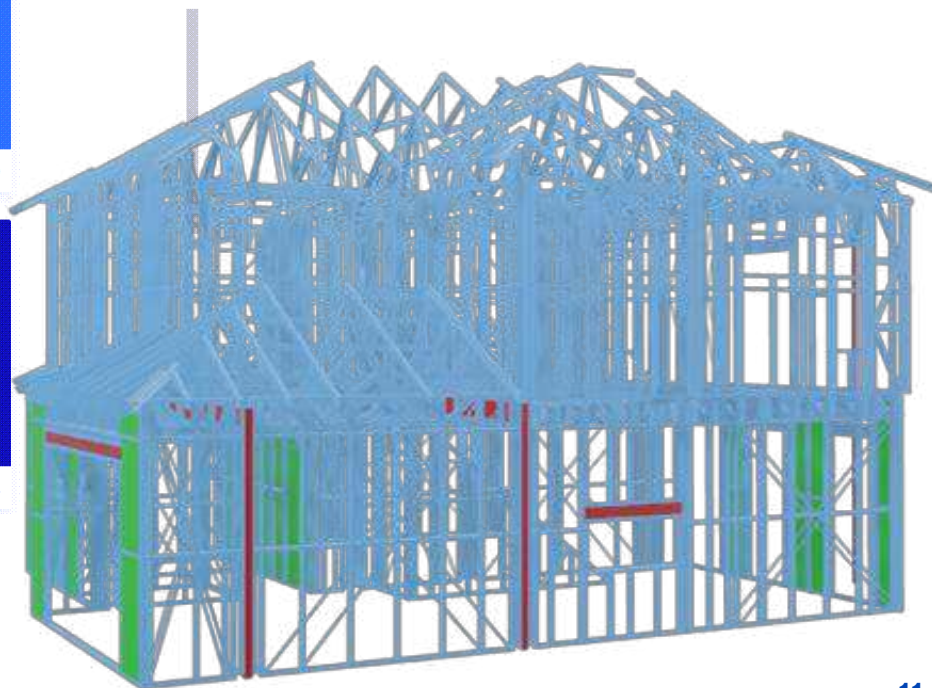
Drayton 49 0 0



\_I\_6989 Final\_3D\_Model 444 1 1



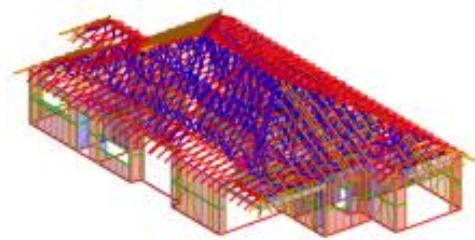
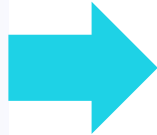
3D Steel Frame- Mermaid Waters 288 1 2



# IT IS THE SOFTWARE BEHIND THE ENDUROFRAME® SYSTEM SET'S IT APART & DELIVERS AN EFFICIENT FRAMING MODEL



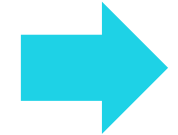
**ENDUROCADD® reads the architectural plans**



**ENDUROCADD® develops a 3D model of the house modelling all the steel framing components**



**ENDUROCADD® prepares a structural analysis of the trusses following the selected loads.**



ENDURO

3 ENDUROFRAME® SYSTEM SET'S

1.1 SINGLE OR UPPER END

1.1.1 TABLES & FIGURES

1.1.1.4 STAYS SUPPORTING

TABLE 22 Steel Roof - Wall

(Steel Beams)

Item	Quantity	Unit	Value
1	1	m	1.00
2	1	m	1.00
3	1	m	1.00
4	1	m	1.00
5	1	m	1.00
6	1	m	1.00
7	1	m	1.00
8	1	m	1.00
9	1	m	1.00
10	1	m	1.00
11	1	m	1.00
12	1	m	1.00
13	1	m	1.00
14	1	m	1.00
15	1	m	1.00
16	1	m	1.00
17	1	m	1.00
18	1	m	1.00
19	1	m	1.00
20	1	m	1.00
21	1	m	1.00
22	1	m	1.00
23	1	m	1.00
24	1	m	1.00
25	1	m	1.00
26	1	m	1.00
27	1	m	1.00
28	1	m	1.00
29	1	m	1.00
30	1	m	1.00
31	1	m	1.00
32	1	m	1.00
33	1	m	1.00
34	1	m	1.00
35	1	m	1.00
36	1	m	1.00
37	1	m	1.00
38	1	m	1.00
39	1	m	1.00
40	1	m	1.00
41	1	m	1.00
42	1	m	1.00
43	1	m	1.00
44	1	m	1.00
45	1	m	1.00
46	1	m	1.00
47	1	m	1.00
48	1	m	1.00
49	1	m	1.00
50	1	m	1.00
51	1	m	1.00
52	1	m	1.00
53	1	m	1.00
54	1	m	1.00
55	1	m	1.00
56	1	m	1.00
57	1	m	1.00
58	1	m	1.00
59	1	m	1.00
60	1	m	1.00
61	1	m	1.00
62	1	m	1.00
63	1	m	1.00
64	1	m	1.00
65	1	m	1.00
66	1	m	1.00
67	1	m	1.00
68	1	m	1.00
69	1	m	1.00
70	1	m	1.00
71	1	m	1.00
72	1	m	1.00
73	1	m	1.00
74	1	m	1.00
75	1	m	1.00
76	1	m	1.00
77	1	m	1.00
78	1	m	1.00
79	1	m	1.00
80	1	m	1.00
81	1	m	1.00
82	1	m	1.00
83	1	m	1.00
84	1	m	1.00
85	1	m	1.00
86	1	m	1.00
87	1	m	1.00
88	1	m	1.00
89	1	m	1.00
90	1	m	1.00
91	1	m	1.00
92	1	m	1.00
93	1	m	1.00
94	1	m	1.00
95	1	m	1.00
96	1	m	1.00
97	1	m	1.00
98	1	m	1.00
99	1	m	1.00
100	1	m	1.00

**Includes structural analysis of all other components**

# IT IS THE SOFTWARE BEHIND THE ENDUROFRAME® SYSTEM SET'S IT APART & DELIVERS AN EFFICIENT FRAMING MODEL



ENDUROWALL™ BUILDING SYSTEM + Design Manual

3. ENDUROWALL™ BUILDING SYSTEM

3.1 SINGLE OR UPPER OF TWO STOREY

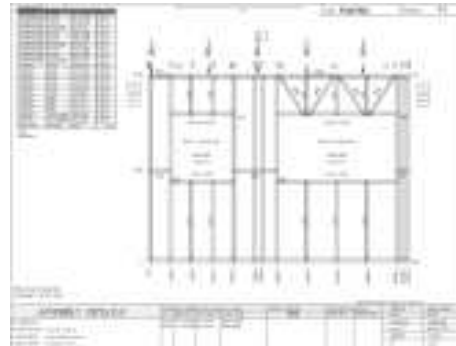
3.1.1 TABLES & FIGURES

3.1.1.4 STAYS SUPPORTING UNDERTRUSSES - STEEL ROOF

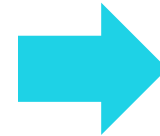
TABLE 3.1.1.4 Steel Roof - Wall height 2000, NZ region, Unbraked C, 10 x 0.50mm stud, 0.00m (Wind Reverse)

Span	Roof	Wall	Roof	Wall	Roof	Wall	Roof	Wall	Roof	Wall
10	10	10	10	10	10	10	10	10	10	10
15	15	15	15	15	15	15	15	15	15	15
20	20	20	20	20	20	20	20	20	20	20
25	25	25	25	25	25	25	25	25	25	25
30	30	30	30	30	30	30	30	30	30	30
35	35	35	35	35	35	35	35	35	35	35
40	40	40	40	40	40	40	40	40	40	40
45	45	45	45	45	45	45	45	45	45	45
50	50	50	50	50	50	50	50	50	50	50

**Includes structural design tables of all other components used in the frames.**



**Prepares the numeric control data for manufacturing and drawings**



**Prepares the certification for the frames in lieu of an engineers certificate**



# IT IS THE SOFTWARE BEHIND THE ENDUROFRAME® SYSTEM SET'S IT APART & DELIVERS AN EFFICIENT FRAMING MODEL



**ENDUROCADD® integrates with  
ENDUROHUB to schedule  
manufacturing orders**



**... and runs the rollformers**



**... and ready for fabrication**



**Much lighter in weight yet similar in layout to timber trusses**



**Plasterboard easily attached**



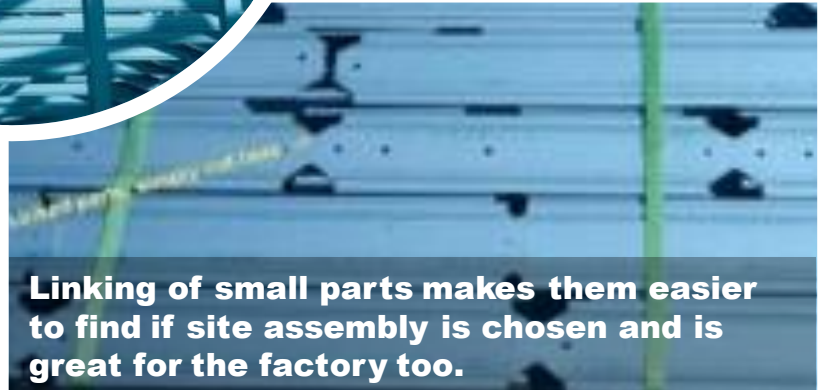
**Multiple service holes**



**Very straight no planning or packing required.**



**System simply screws together, easy adjustment if required**



**Linking of small parts makes them easier to find if site assembly is chosen and is great for the factory too.**

# ENDUROCADD® SOFTWARE: KEY FEATURES

---

- ✓ Complies with ABCB Protocol for Structural Software which means compliant projects can be self-certified
- ✓ Developed in Australia for Australian conditions and building requirements
- ✓ Tested by Australian builders, engineers & manufacturers
- ✓ Designed to integrate closely with ENDURO® rollformers
- ✓ Additional software licenses are low cost enabling simple expansion
- ✓ Able to import and export IFC (BIM) models
- ✓ Comprehensive modelling of parts and costing
- ✓ 4 – 6 releases/updates per year
- ✓ Close collaboration with licensees to develop requirements