

TrueCore®

**CORROSION VS
STRENGTH LOSS:
AN UNDERRATED RISK**

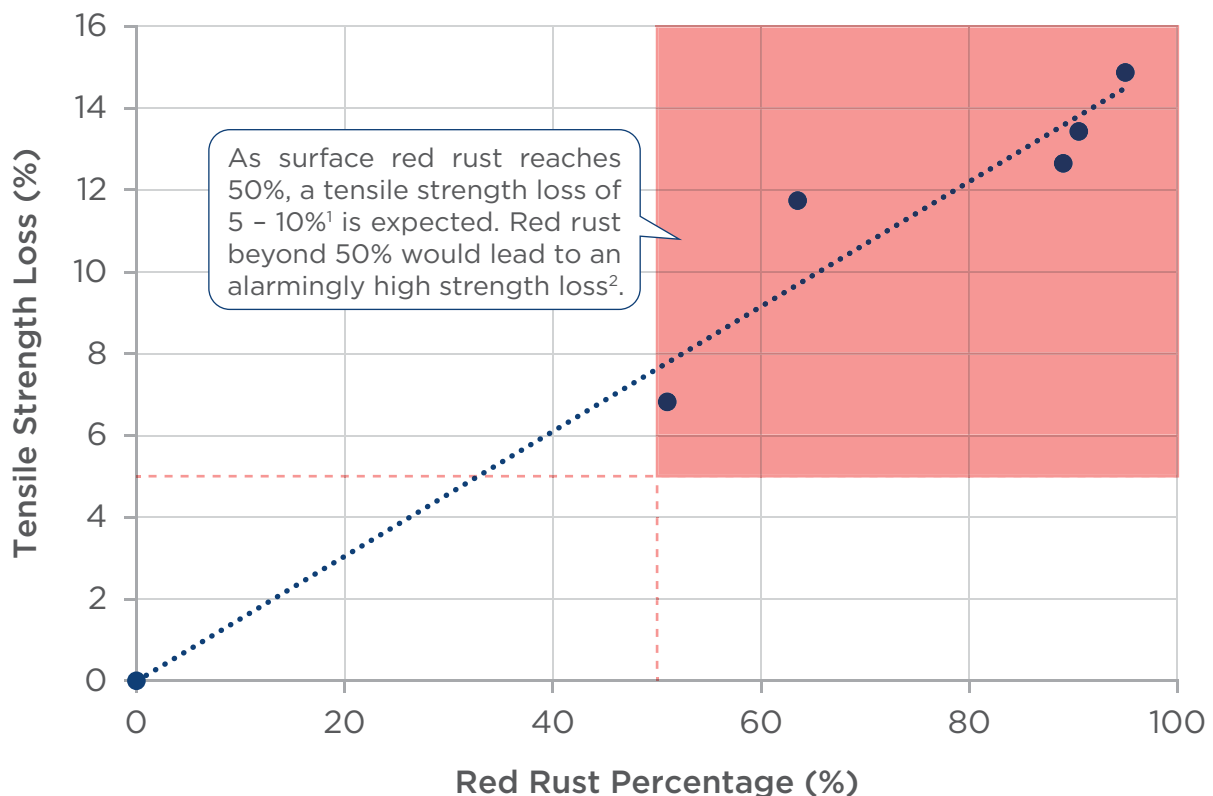


The Silent Dangers Of Corrosion



Corrosion vs Strength Loss

Did you know that even when structures are shielded from the rain, it is still vulnerable to corrosion? Areas that are not washed naturally by rain tend to accumulate more corrosive substances (i.e. salt) over time, leading to more localised corrosion especially under humid and salt-laden environments such as coastal regions.



So the big question is; **are you willing to risk a structure that is less than safe?**

Note: 1. Adopted from BlueScope's Literature.

2. The data analysis was based on the coated steel material itself. It does not represent any direct relationship to structural design strength loss.

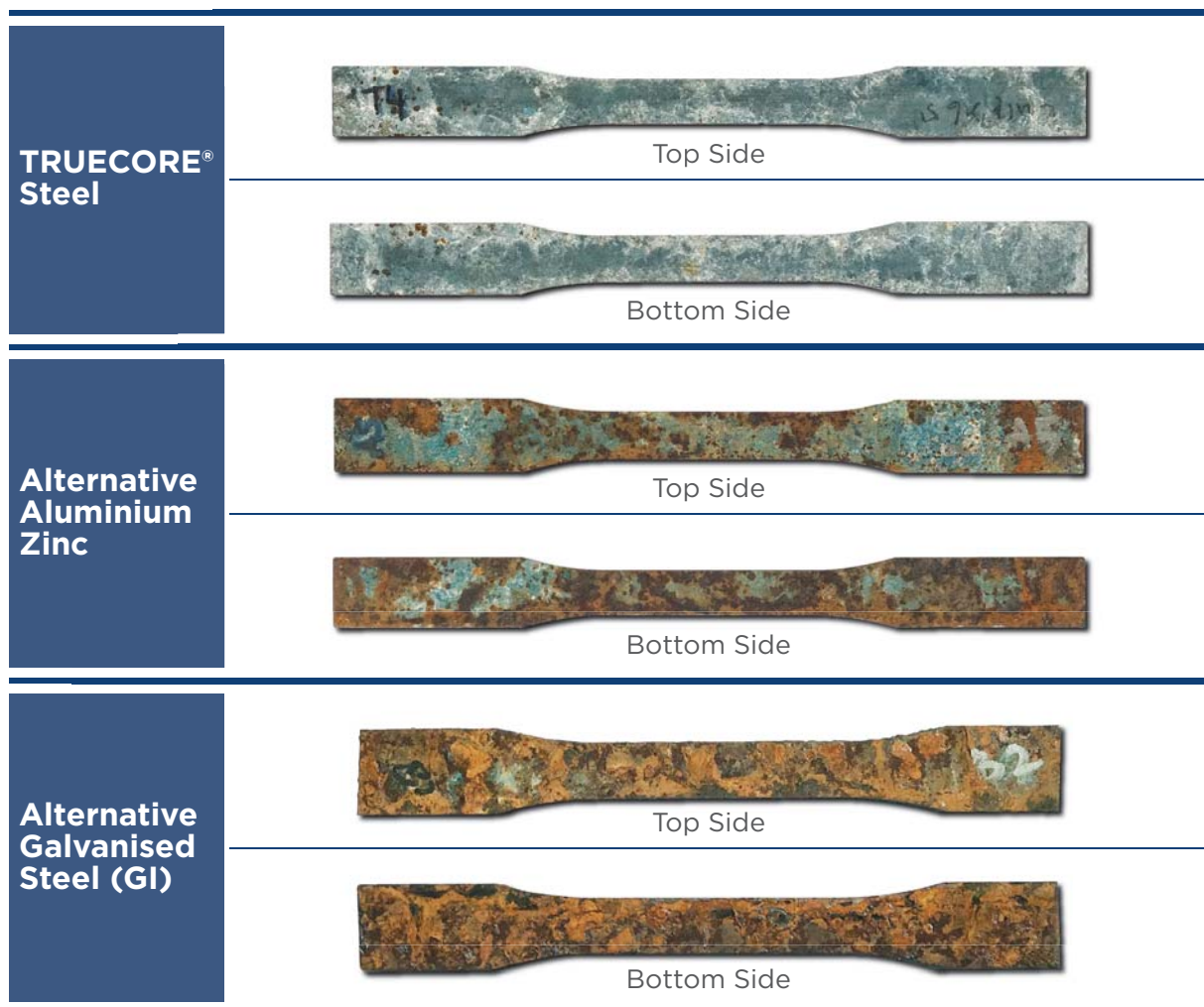
Source: CPA-TRUSS-MUL-SST-750

Fighting Corrosion With The Right Steel

Shielded with anti-corrosion coating type and its technology

The choice of the alloy coating type and its technology is crucial to the lifespan of coated steel. Produced using BlueScope's proprietary metallic coating technology, TRUECORE® steel delivers superior corrosion resistance compared to other generic alternatives, thanks to its pioneering mix of aluminum/zinc coating. This is crucial in preserving the high yield strength of TRUECORE® steel which contributes to exceptional long-lastingness.

The images below showed different degrees of red rust after 750 hours of Salt Spray Test (SST¹).



Note: 1. SST is a type of accelerated corrosion test that produce a corrosion attack to coated steel via continuous salt spray test accordance to ASTM B117-18 test method. It does not have direct correlation with environments in which the product may be exposed in service or as indicating the relative corrosion resistance of different coatings.

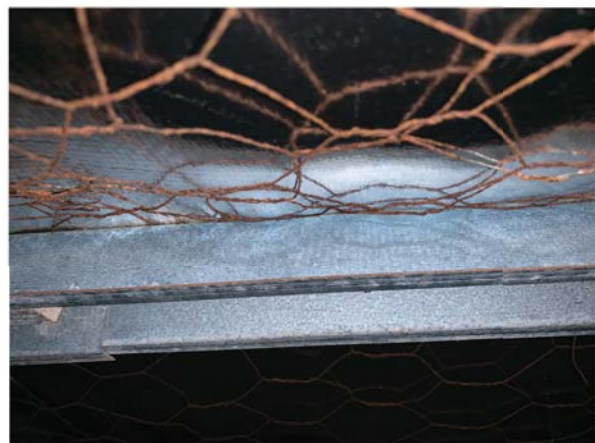
Source: CPA-TRUSS-MUL-SST-750

Proven Performance Against The Test Of Time

A case study on TRUECORE® steel

A study was recently conducted in a local school on the performance of TRUECORE® steel after 10 years of use. With a proper, fully enclosed design and installation in accordance to BlueScope's Technical Bulletin [TB-34](#), the structure continued to exhibit excellent performance and showed no signs of corrosion.

The findings on these actual applications demonstrated the assurance of quality performance in TRUECORE® steel.



Source: BlueScope Case Study (June 2019): TRUECORE® steel after 10 years.



For product identification and originality, please check the reverse side of the sheet for the following branding text.

TRUECORE (R) AZ150 G550 steel made by BlueScope h h m m d d m o m y y 11



NS BlueScope Malaysia Sdn. Bhd. 199101012824 (223136-P)

SALES & MARKETING OFFICE

Level 11, Tower 8, UOA Business Park,
No. 1, Jalan Pengaturcara U1/51A,
Seksyen U1, 40150 Shah Alam,
Selangor, Darul Ehsan, Malaysia.

T +603 5022 1000

F +603 5022 1001

E enquiries.malaysia@bluescope.com

W www.nsbluescope.com/my

MANUFACTURING PLANT

Lot 1551, Jalan Bukit Kapar, 42200 Kapar,
Selangor Darul Ehsan, Malaysia.

T +603 3361 6888

F +603 3361 6889

Customer Care: 1 300 88 6288

Find us on     **NS BlueScope Malaysia**



The information contained in this sales tool kit is of a general nature only, and has not been prepared with your specific needs in mind. You should always obtain specialist advice to ensure that any materials, approaches and techniques referred to in this sales tool kit meet your specific requirements.

NS BlueScope Malaysia makes no warranty as to the accuracy, completeness or reliability of any estimates, opinions or other information contained in this sales tool kit, and to the maximum extent permitted by law, NS BlueScope Malaysia disclaims all liability and responsibility for any loss or damage, direct or indirect, which may be suffered by any person acting in reliance on anything contained in or omitted from this document.

TRUECORE® is a registered trade mark of BlueScope Steel Limited.

BlueScope is a registered trade mark of BlueScope Steel Limited.

Copyright © 2021 NS BlueScope Malaysia Sdn. Bhd. All rights reserved. No part of this sales tool kit may be reproduced, stored in a retrieval system, or transmitted in any form or by any means, electronic, mechanical, photocopying, recording or otherwise, without the written permission of NS BlueScope Malaysia Sdn. Bhd.

STK Ref No.: FA/0821/5S