



# WE CARE FOR YOUR **PEACE OF MIND**

---

Lasting warranty coverage  
for your roof and  
other steel applications



---

# Peace of mind that lasts with **Warranty Backed by BlueScope**

Using our coated steel for your home comes with a warranty backed directly by BlueScope. What that means is peace of mind and a guarantee that your new investment will enjoy durable, reliable protection that delivers lasting value.

The quality assurance offered is supported by comprehensive testing programmes that involve accelerated laboratory and real outdoor exposure tests, and actual case studies on product performance from various environments around the world.

## The Warranty at a Glance

### Warranty Coverage for Benign Environments

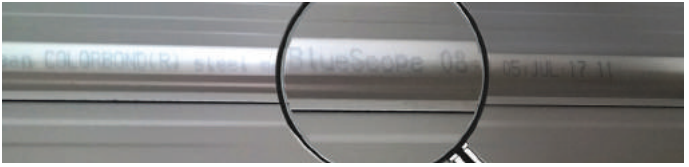
Buildings located more than 1km from marine influence and/or more than 2km from industrial influence.

Warranty against (years)*	COLORBOND® Matt	COLORBOND® Spectrum	VERMOE®
Perforation by Corrosion	25		25
Paint Flake and Peel	15		10
Excessive Colour Fading	12		8
Discolouration by Dirt Staining	5		N/A

\*Warranty coverage is applicable to roofing and walling applications, and the scope of warranty may defer depending on applications. The material warranty may not apply to buildings in marine or industrial environments and is subjected to approval by BlueScope. Warranty terms and conditions apply.

## Why is the BlueScope Branding Text Important For Your Warranty?

To assist you in identifying genuine steel products made by BlueScope, pay attention to the **Branding Text** on the reverse side of the steel sheet.



Distinct branding text contains information of the steel brand name, product date and time. The branding text confirms your purchased brands, eases identification, thus making warranty claims more effective and traceable.

Clean COLORBOND (R) MATT steel made by BlueScope 16:18 01:MAY:21 II

Clean COLORBOND (R) steel - Spectrum Series made by BlueScope 16:18 01:MAY:21 II

VERMOE (R) steel made by BlueScope 16:18 01:MAY:21 II



### TIPS

Upon receiving your Steel Sheet, here are some crucial things you'll need to do:



**Locate The BlueScope Branding Text** on the reverse side of the steel sheet.



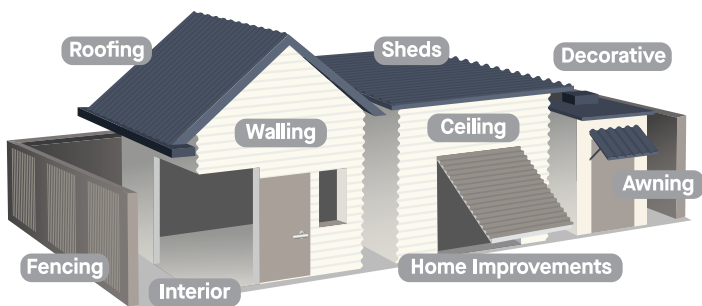
**Take a picture of the Full Branding Text** which includes production details for your keeping and warranty activation.



**Check your product condition** to ensure your products come in proper condition, with surface free of damage.

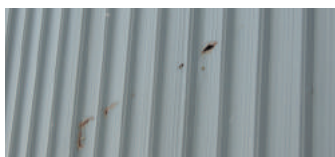
---

# Types of **Steel** Applications Covered



---

# Types of **Defects Covered**



• Perforation by Corrosion



• Excessive Colour Fading



• Paint Flake and Peel



• Discolouration by Dirt Staining

### **1. Why and when do I need a warranty?**

With a warranty by BlueScope, you will be assured that any defects arising from material quality will be borne by your warranty coverage, providing you with lasting peace of mind.

Besides, a warranty directly from BlueScope also serves as an assurance of material genuineness directly from the manufacturer.

### **2. Does my warranty cover only roofing applications? How about other applications like walls, ceilings and interior?**

BlueScope's warranty\* assures your investment for various applications – be it for roofing, walling, interior or decorative applications. The scope of warranty may differ depending on applications.

\*Warranty terms and conditions apply.

### **3. How long does it take for my warranty certificate to be issued?**

Upon completion of your application, you can expect to receive your warranty certificate within a few working days from our BlueScope Warranty Centre.

Do bear in mind that it is important for you to provide clear and accurate information such as a traceable address, clear pictures and the right product details as requested in your application form.

### **4. Can I do my own installation? Will it affect my warranty coverage?**

We strongly do not recommend it primarily due to safety risks. Besides, proper product handling and installation are vital to ensure the product warranties and performance are not affected.

You may ask for recommendations of a trusted contractor or installer from the store that you have purchased from.

### **5. How do I find a right contractor or installer?**

You may speak to the store that you have purchased from to introduce a qualified contractor or installer.

### **6. How do I initiate the warranty claim process?**

You may Whatsapp our **BlueScope Warranty Centre** at **017-216 7613** or email **enquiries.malaysia@bluescope.com** to start your claim process. Updates to your warranty claim will be provided via the BlueScope Warranty Centre.

### **7. If I have concerns or queries over my new steel applications, who can I reach out to?**

For installation or repairs, you may reach out to your respective contractor/installer.

For warranty and roofing material queries, feel free to reach out via email **enquiries.malaysia@bluescope.com**. You may scan the QR code at the last page to start contact.

Scan to Activate Your Warranty today!



BlueScope Warranty Centre  
+6017 216 7613



NS BlueScope Malaysia Sdn. Bhd. 199101012824 (223136-P)

SALES & MARKETING OFFICE  
Level 11, Tower 8, UOA Business Park,  
No. 1, Jalan Pengaturcara U1/ 51A,  
Seksyen U1, 40150 Shah Alam,  
Selangor, Darul Ehsan

T +603 5022 1000  
F +603 5022 1001  
E [enquiries.malaysia@bluescope.com](mailto:enquiries.malaysia@bluescope.com)  
W [www.nsbluescope.com/my](http://www.nsbluescope.com/my)

MANUFACTURING PLANT  
Lot 1551, Jalan Bukit Kapar, 42200 Kapar,  
Selangor Darul Ehsan, Malaysia.

T +603 3361 6888  
F +603 3361 6889

Customer Care: 1 300 88 6288

Find us on     NS BlueScope Malaysia



Singapore Green Building Product  
Certified to MS2383:2011  
Certification No. PC001163



Singapore Green Building Product  
Certified to AS/NZS2728  
Certification No. PB030302



Singapore Green Building Product  
Certified to AS/NZS2728  
Certification No. PB030302

The information contained in this brochure is of generic nature only and has not been prepared with your specific requirements.

NS BlueScope Malaysia makes no warranty as to the accuracy, completeness and reliability of any estimates, opinions or other information contained in this brochure, and to the maximum extent permitted by law, NS BlueScope Malaysia disclaims all liability and responsibility for any loss or damage, direct or indirectly, which may be suffered by any person acting in reliance on anything contained in or omitted from this document.

COLORBOND® Steel is a trademark of BlueScope Steel Limited.

VERMOE® is a trademark of BlueScope Steel Limited.  
BlueScope is a registered trademark of BlueScope Steel Limited.

Copyright © 2022 NS BlueScope Malaysia Sdn. Bhd. All rights reserved. No part of this brochure may be reproduced, stored in a retrieval system, or transmitted in any form or by any means, electronics, mechanical, photocopying, recording or otherwise, without the written permission of NS BlueScope Malaysia Sdn. Bhd.