

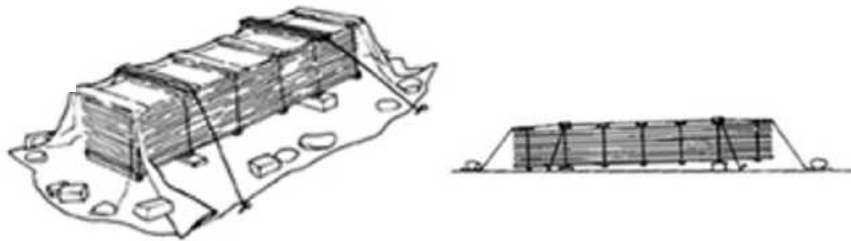
The Do's and Don'ts of Handling Coated Steel Roofing with Care

This bulletin is intended as a guide only and is not a complete or exhaustive list. It is the responsibility of the relevant contractor to comply with good building practices.

Revision 0: January 2024

1

Material should be stored dry at all times, therefore cover stack with a tarp and stack sheets or bundles clear of the ground to avoid material getting wet. Please refer to Technical Bulletin (TB-7) for further elaboration.



2

Use metal blades rather than angle grinders as they produce fewer damaging hot metal particles, leaving fewer burrs on the cut sheet. Recommend the use of cold cutting saws with appropriate blade. Please refer to Technical Bulletin (TB-5) for further elaboration.



3

For long lasting consistency in appearance, the roofing accessories (e.g., flashing etc.) should be made from the same material as the coated steel roofing. Please refer to Technical Bulletin (TB-8) for further elaboration.

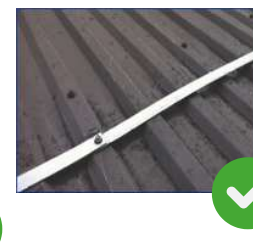
Zincalume®



Galvanised Flashing

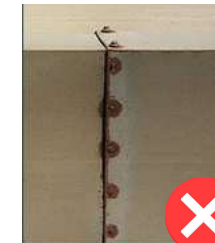
4

Recommend to use aluminium lightning arrester instead of copper material on BlueScope's coated steel roofing. Please refer to Corrosion Technical Bulletin (CTB-12) for further elaboration.



5

It is vital that the performance of fasteners used would have the same or superior service life as BlueScope's coated roofing. Use AS 3566 Class 3 or Class 4 fasteners. Please refer to Technical Bulletin (TB-16) for further elaboration.



The information and advice contained in this document is of a general nature only and has not been prepared with your specific needs in mind. You should always obtain specialist advice to ensure that the materials, approach, and techniques referred to in this document meet your specific requirements. NS BlueScope Malaysia Sdn. Bhd. makes no warranty as to the accuracy, completeness or reliability of any estimates, opinions or other information contained in this Fact Sheet and to the maximum extent permitted by law, NS BlueScope Malaysia Sdn Bhd disclaims all liability and responsibility for any loss or damage, direct or indirect, which may be suffered by any person acting in reliance on anything contained in or omitted from this document. No part of this leaflet may be reproduced, stored in a retrieval system, or transmitted in any form or by any means, electronic, mechanical, photocopying, recording or otherwise without written permission of NS BlueScope Malaysia Sdn. Bhd. COLORBOND®, ZINCALUME® and the BlueScope brand mark are registered trademarks of BlueScope Steel Limited.