



**OUTSTANDING
CORROSION
RESISTANCE**

Safeguard Buildings even in Severe Marine Environment

Colorbond®

Zincalume®

What is Corrosion?

Corrosion is caused by the deterioration of metal due to chemical reaction as a result of exposure to the environment (water and oxygen). It is also known as oxidation. Corrosion of metal results in the formation of rust or oxides in the corroded area.

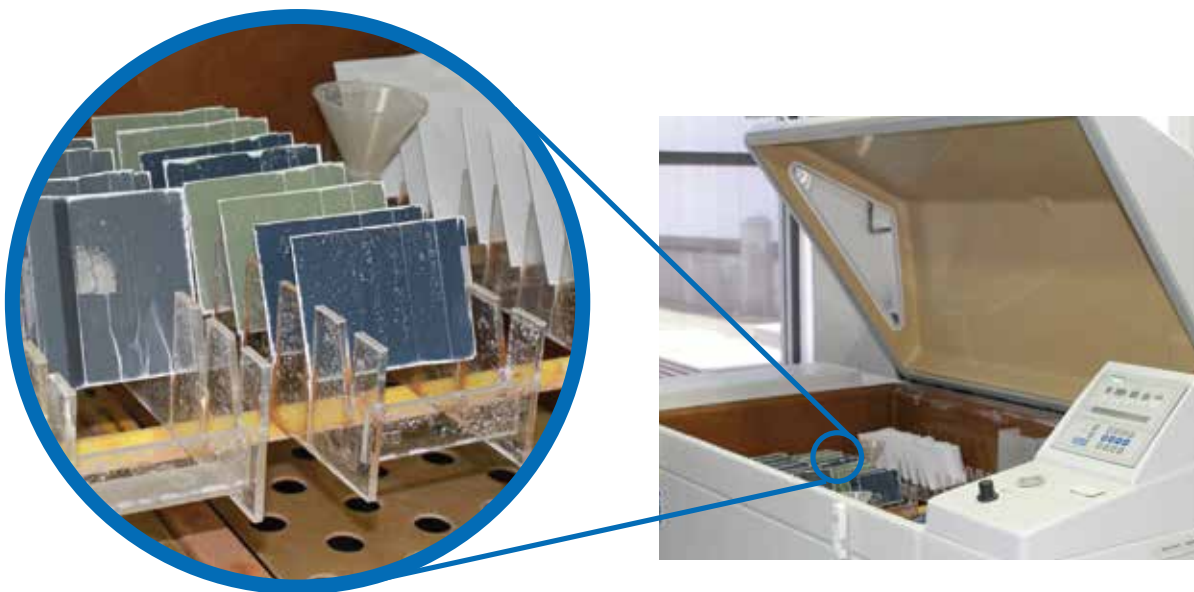


ZINCALUME® Coated Steel Substrate

COLORBOND® steel is crafted with ZINCALUME® steel and proprietary paint system developed by BlueScope, consisting of a coating composition of 43.5% zinc, 55.0% aluminum, and 1.5% silicon. The minimum coating mass of 150 g/m² (AZ150) offers superior corrosion performance under varied conditions, when compared with other metallic coated steel.

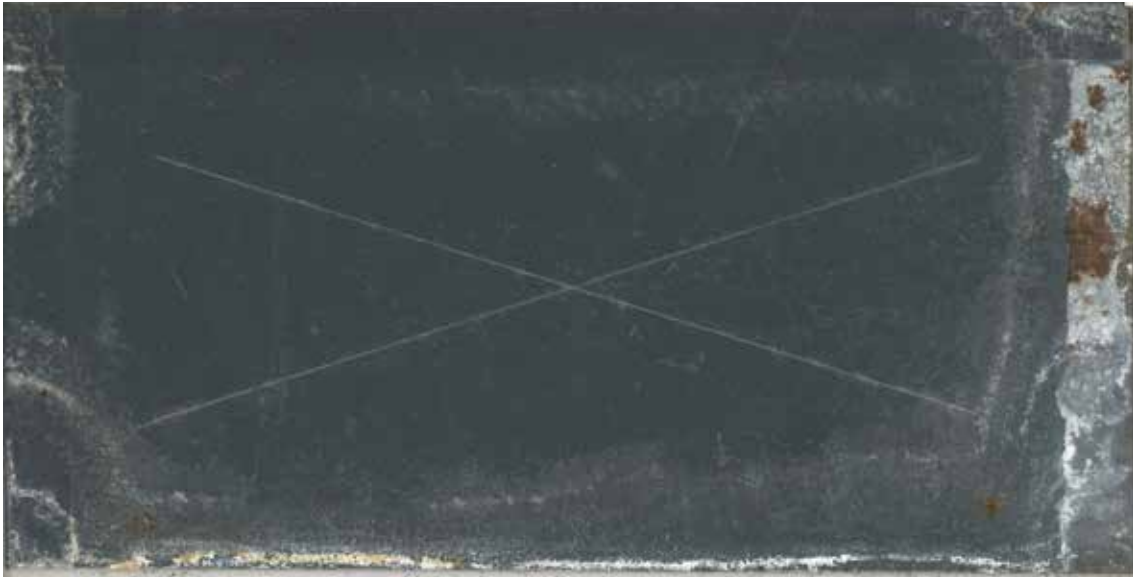
Cyclic Corrosion Test

Accelerated corrosion test is often used to deliver a fast indication of products' relative corrosion resistance performance. Cyclic Corrosion Test (CCT) is an accelerated test method that is able to simulate product performance under high heat, humid and corrosive environment. By specifying the composition and concentration of the salt solution, the temperature, pH and humidity level as well as the order of the salt spray, heat and humidity cycle, CCT is able to provide a rapid and more realistic indication of corrosion resistance performance for coated steel products in construction applications under corrosive environment.

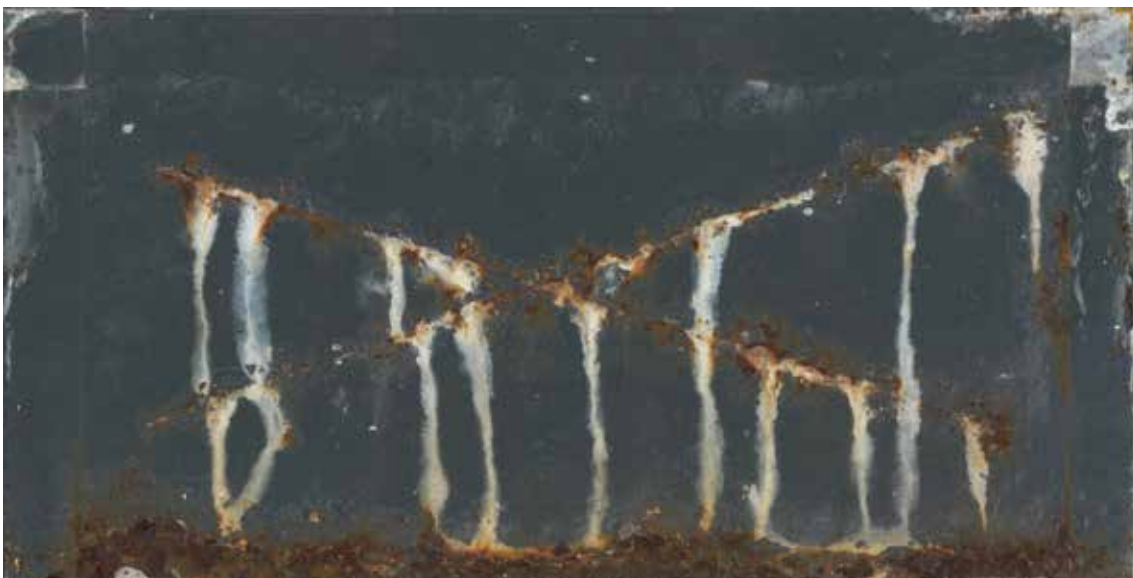


Performance Comparison

COLORBOND® steel and ordinary pre-painted galvanised steel after 2000 hours of cyclic corrosion testing condition (AS 2331.3.13 - Cycle E). Ref: LSR15066.



COLORBOND® steel



Pre-painted steel by others



NS BlueScope Malaysia Sdn. Bhd.
199101012824 (223136-P)

Level 11, Tower 8, UOA Business Park,
No.1, Jalan Pengaturcara U1/51A,
Seksyen U1, 40150 Shah Alam,
Selangor Darul Ehsan.

☎ +603 5022 1000

🖨 +603 5022 1001

✉ enquiries.malaysia@bluescope.com

🌐 www.nsbluescope.com/my

📺 📢 📷 📺 NS BlueScope Malaysia

Customer Care: 1 300 88 6288



The information contained in this brochure is of a general nature only, and has not been prepared with your specific needs in mind. You should always obtain specialist advice to ensure that any materials, approaches and techniques referred to in this brochure meet your specific requirements.

NS BlueScope Malaysia makes no warranty as to the accuracy, completeness or reliability of any estimates, opinions or other information contained in this brochure, and to the maximum extent permitted by law, NS BlueScope Malaysia disclaims all liability and responsibility for any loss or damage, direct or indirect, which may be suffered by any person acting in reliance on anything contained in or omitted from this document.

COLORBOND® and ZINCALUME® are trademarks of BlueScope Steel Limited.

BlueScope is a registered trade mark of BlueScope Steel Limited.

Copyright © 2024 NS BlueScope Malaysia Sdn. Bhd. All rights reserved. No part of this brochure may be reproduced, stored in a retrieval system, or transmitted in any form or by any means, electronic, mechanical, photocopying, recording or otherwise, without the written permission of NS BlueScope Malaysia Sdn. Bhd.

Disclaimer: The comparison results only applied to this particular product and do not represent all products available in the market. The images of the tested steel samples in this brochure have been digitally adjusted to represent the actual appearance of the steel plates as accurate as possible.